

HIGH VOLUME SHIPMENT: LOADING THE SAFEPAK® XL

SECTION A

RECEIVING SHIPPER

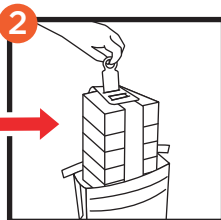
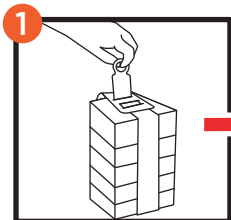
STEP 1

UNLATCHING INSTRUCTIONS

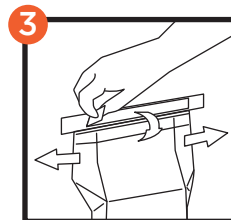
**UNLATCH THE ENCLOSURE PER INSTRUCTION 9356,
HOW TO UNLATCH & LATCH HIGH VOLUME ENCLOSURES**

SECTION B

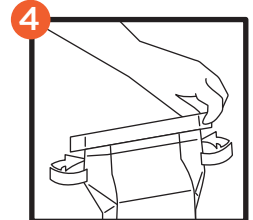
PREPARING THE SAFEPAK® XL (Please refer to Cryotrap® Instructions)



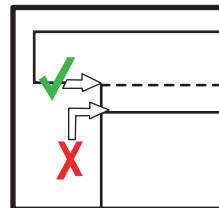
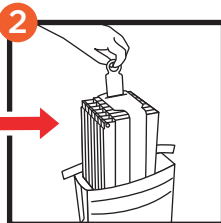
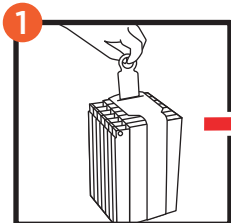
Open Bag and insert one rack into top opening. Lower rack completely into bag.



Flatten top section of pouch. Remove cover from adhesive strip, fold along crease (Detail A) and seal bag.



Fold tabs around edges and seal.



Detail A (close up of crease)

SECTION C

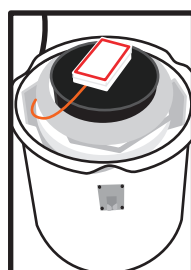
LOADING SAMPLES FOR SHIPMENT



Load the Safepak® XL into the Dewar



Allow it to sit in the bottom of the Dewar



Replace the dewar lid.

IMPORTANT NOTE: Commodity and accessories must be pre-conditioned prior to loading into the sample chamber. A **20% reduction of holding time** can occur if the materials are not preconditioned prior to loading into the shipper.

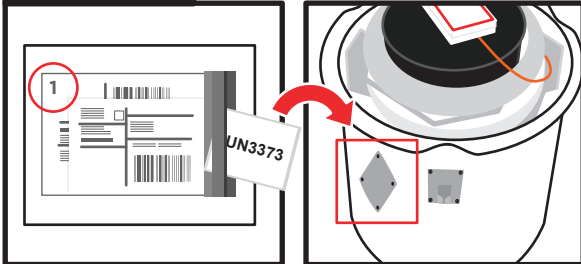
**IF THE DRY SHIPPER DOES NOT EMIT VAPOR WHEN PLUG IS REMOVED
PLEASE CONTACT CUSTOMER SERVICE IMMEDIATELY, BY CALLING (949) 470-2305 OR EMAIL CS@CRYOPORT.COM**

HIGH VOLUME SHIPMENT: LOADING THE SAFEPAK® XL

SECTION D

PACKAGING THE SHIPMENT

STEP 1



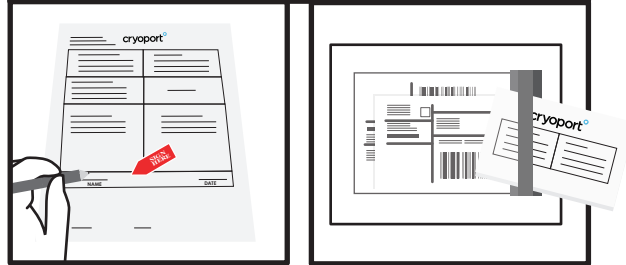
Remove documents from the shipping pouch #1.

Remove any classification labels from the shipping pouch and place on the metal diamond.

STEP 2

Remove the commercial Invoices located in the shipping pouch.

International Shipments ONLY

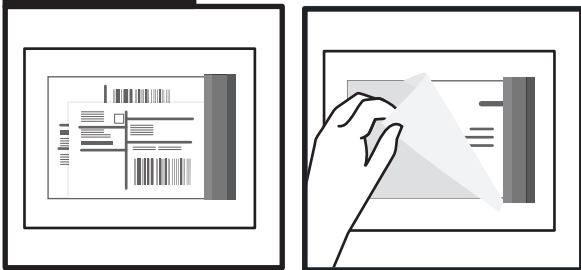


1. Sign and date.

2. Return all documents being shipped behind the Air Waybill Including any: Permits, Forms, Licenses, etc.

STEP 3

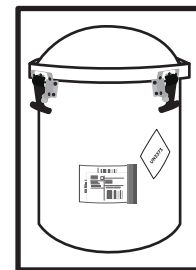
Once all documents are loaded:



1. Close the shipping pouch and remove sticker backing.



2. Place shipping pouch on the metal plate.



3. Close lid.

STEP 6

**LATCH THE ENCLOSURE PER INSTRUCTION 9356,
HOW TO UNLATCH & LATCH HIGH VOLUME ENCLOSURES**

For those shipments containing regulated dangerous goods/hazardous materials, the shipper is responsible for correctly preparing the shipment according to the current International Air Transport Association (IATA) and International Civil Aviation Organization (ICAO) dangerous goods regulations.

This includes correct identification, classification, packaging, dangerous goods markings and labeling as well as completion of all pertinent and required documentation. The shipper is the customer who is preparing the shipment at each leg in the transportation of the dry dewar packaging.