

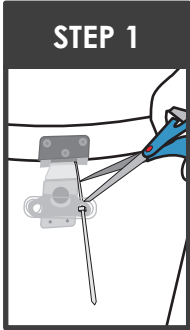
## OPTIONAL LATCHES ON HIGH VOLUME SHIPMENTS

### OPTION 1

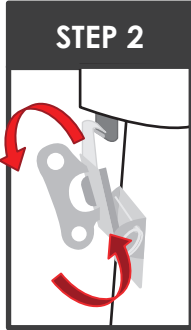
### SILVER METAL LATCH INSTRUCTIONS

#### UNLATCHING INSTRUCTIONS

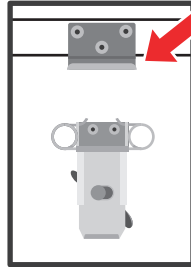
#### LATCHING & ZIP TIE INSTRUCTIONS



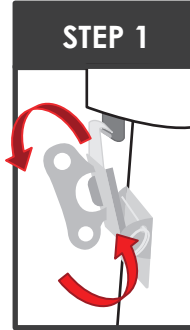
**STEP 1**  
Remove zip-ties with scissors.



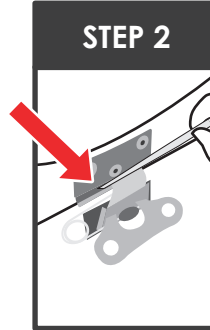
**STEP 2**  
Unlock latches by turning key to the left.



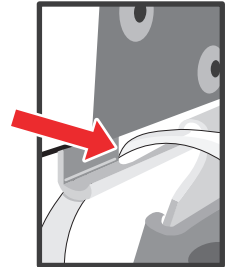
The latch will "unhook," from the top of the metal hardware.



**STEP 1**  
Lock latch by turning the key to the right.

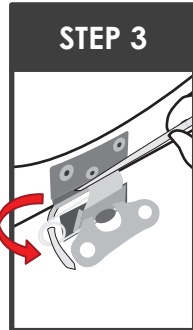


**STEP 2**  
Insert zip tie down through lid latch catch.

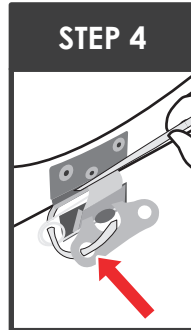


Assure that zip tie is through the latch catch slot.

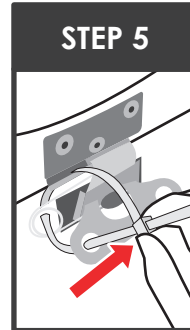
#### LATCHING ZIP TIE INSTRUCTIONS (CONTINUED)



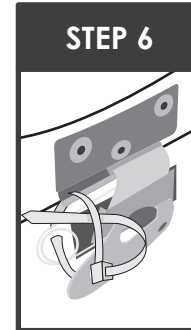
**STEP 3**  
Thread end of zip tie through body latch spring loop.



**STEP 4**  
Thread zip tie up through body latch turn-buckle hole.



**STEP 5**  
Insert zip tie through lid buckle and tighten.



**STEP 6**  
Finish by inserting the end of the zip tie back through loop.

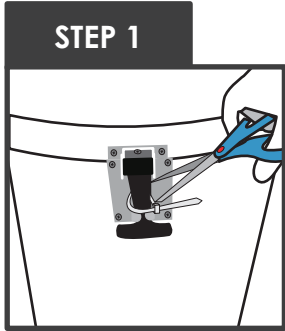
**IF THE DRY SHIPPER DOES NOT EMIT VAPOR WHEN PLUG IS REMOVED**  
PLEASE CONTACT CUSTOMER SERVICE IMMEDIATELY, BY CALLING (949) 470-2305 OR EMAIL CS@CRYOPORT.COM

## OPTIONAL LATCHES ON HIGH VOLUME SHIPMENTS

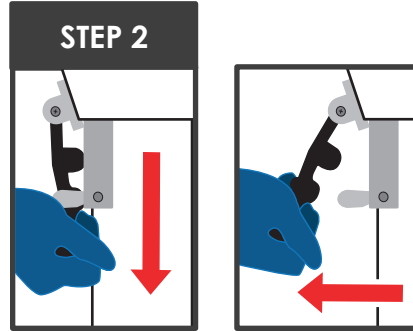
### OPTION 2

### BLACK RUBBER LATCH INSTRUCTIONS

#### UNLATCHING INSTRUCTIONS

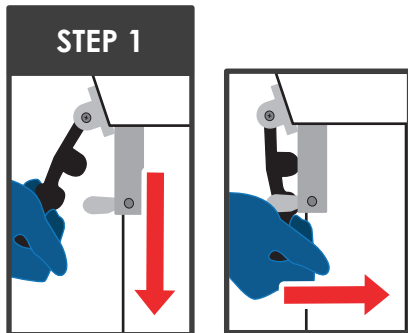


Remove zip-ties with scissors.

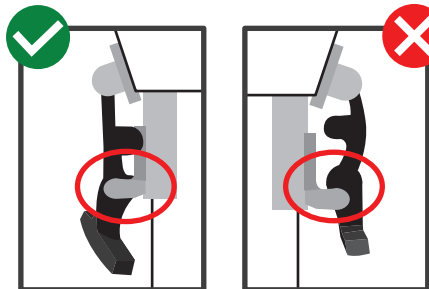


Unlatch both sides by pulling black handle down & away from the shipper.

#### LATCHING & ZIP TIE INSTRUCTIONS



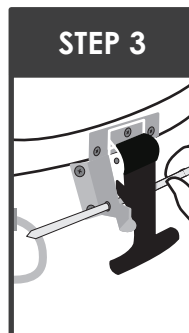
Latch handle on both sides by pulling the black handle down & then towards the shipper.



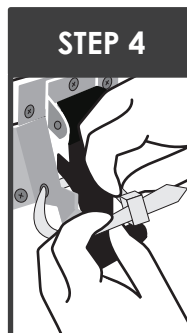
Ensure the ball knob is securely latched in the metal hardware's socket.



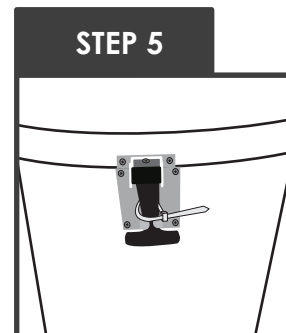
Insert zip-tie through one of the holes on the metal latch hardware.



Thread end of zip-tie through the hole on the other side of the metal hardware.



Insert zip-tie through the lid buckle and tighten.



Zip-tie is now securely around the black handle.