

HIGH VOLUME DRY SHIPPER: ADD MORE LN2 WITH SAMPLES INSIDE

PERSONAL PROTECTIVE EQUIPMENT: CRYOGENIC GLOVES, SAFETY GOGGLES

STEP 1

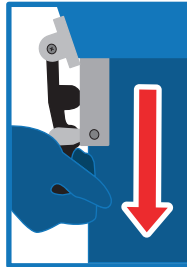
UNLATCHING INSTRUCTIONS



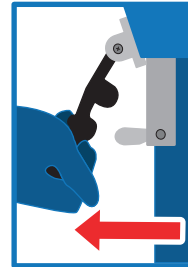
Once the shipper has arrived, remove old shipping pouch and zip-ties.



Remove zip-ties from both black handles with scissors.

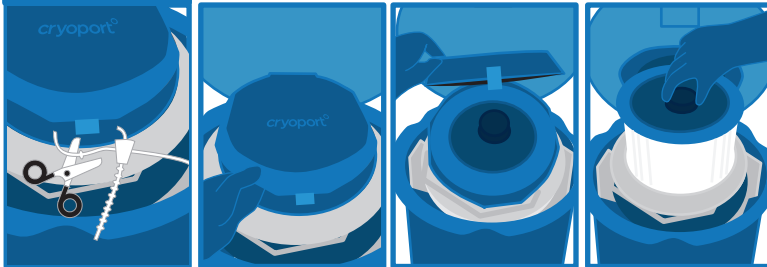


Unlatch both sides by pulling black handle down & away from the shipper.



Open lid to expose the dewar.

STEP 2

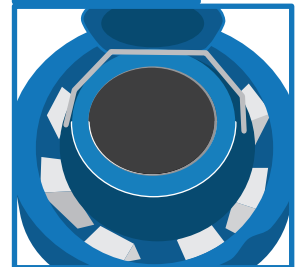


Cut off the zip tie on the hinged cap with scissors.

Open the hinged cap by pulling up on one of the two lift handles on the lid. With gloved hands, pull up on the circular handle in the center of the vapor plug to remove the vapor plug. Set the vapor plug aside.

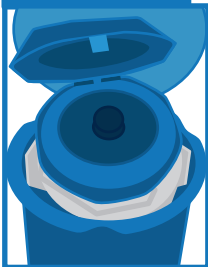
CAUTION
This process may expose samples directly to liquid nitrogen.

STEP 3



Slowly pour Liquid Nitrogen into opening. (Cryoport Client Care will provide information on the amount of LN2 to use for your specific use case.)

STEP 4



Replace the vapor plug.

STEP 5



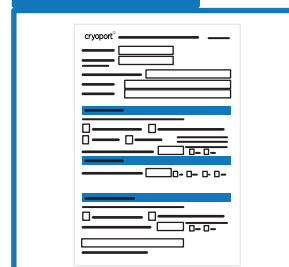
Close the hinged cap by pulling down on the lid. Let the Dry Shipper stabilize, undisturbed, for at least 30 minutes before handing it over to the carrier.

STEP 6



Secure the hinged cap with a zip tie.

STEP 7



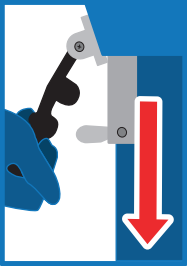
Complete the In Field Recharging form and send it to cs@cryoport.com

**IF THE DRY SHIPPER DOES NOT EMIT VAPOR WHEN PLUG IS REMOVED
PLEASE CONTACT CUSTOMER SERVICE IMMEDIATELY, BY CALLING (949) 470-2305 OR EMAIL CS@CRYOPORT.COM**

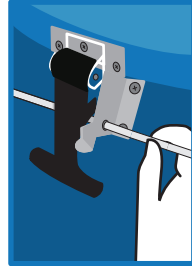
HIGH VOLUME DRY SHIPPER: ADD MORE LN2 WITH SAMPLES INSIDE

STEP 8

LATCHING INSTRUCTIONS



Latch handle on both sides by pulling the black handle down & then towards the shipper.



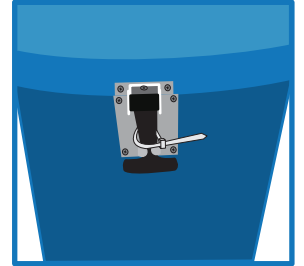
Insert zip-tie through one of the holes on the metal latch hardware.



Thread end of zip-tie through the hole on the other side of the metal hardware.



Insert zip-tie through the lid buckle and tighten.



Zip-tie is now securely around the black handle.

For those shipments containing regulated dangerous goods/hazardous materials, the shipper is responsible for correctly preparing the shipment according to the current International Air Transport Association (IATA) and International Civil Aviation Organization (ICAO) dangerous goods regulations.

This includes correct identification, classification, packaging, dangerous goods markings and labeling as well as completion of all pertinent and required documentation. The shipper is the customer who is preparing the shipment at each leg in the transportation of the dry dewar packaging.

**24-hour Help Line
(949) 470-2305**

Cryoport, Inc. • 17305 Daimler St. • Irvine, CA 92614
Phone: 1-949-470-2300 | Fax: 1-949-470-2306
www.cryoport.com • e-mail contact: cs@cryoport.com