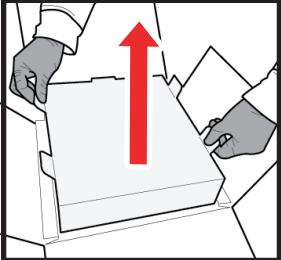


LOADING SAMPLES INTO CRYOPORT EXPRESS® COMBO SHIPPER (CXCB1)

SECTION A

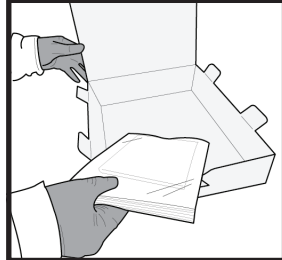
LOADING THE TOP ACCESSORY TRAY

STEP 1



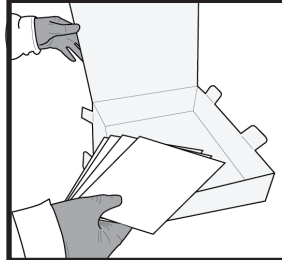
Remove top accessory tray to load commodity. Lift upwards on the white tabs.

STEP 2



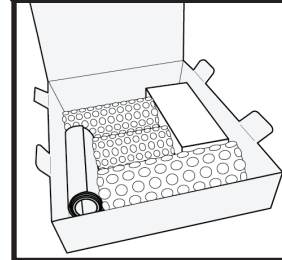
Remove the accessories from the top accessory tray.

STEP 3



Add documents and non-temperature sensitive items/commodity into the top accessory tray.

STEP 4



Add padding to secure non-temperature accessories safely in the top accessory tray.

STEP 5

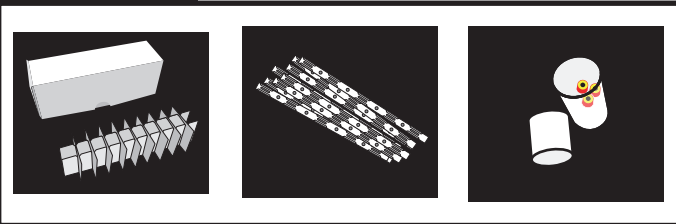
If additional room is needed for non-temperature sensitive accessories, please see the “How to Include and Remove Accessories in the Standard/Combo Shipper” instructions.

SECTION B

PACKAGING THE SPECIMEN

STEP 1

LOADING SAMPLES INTO ACCESSORY CARRIER



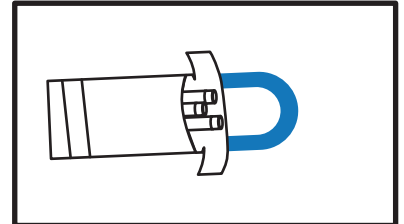
Load samples into the appropriate accessory carrier, such as canes, boxes, plastic goblets, etc. Be sure to replace lid on the plastic goblet. For a complete list of sample carrier accessories, please contact Cryoport.

STEP 2

USING SAFEPAK® FOR SAMPLES IN ACCESSORY CARRIER



The Safepak® bag will hold the following quantities:
Canes: 13 (5 clip canes) for a total of 65 - 2ml or less vials
Goblets: 2
Boxes: 2 (30 ct of 2ml or less vials)



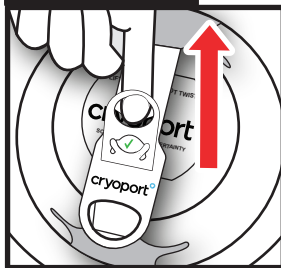
Place samples inside the Safepak® bag and push them all the way down to the bottom of the bag. To seal the Safepak® bag, follow the instructions printed on the back of the Safepak® bag.

SECTION C

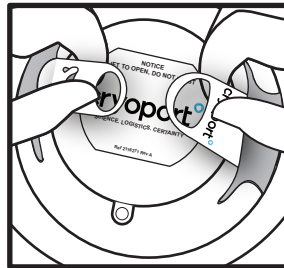
LOADING SAMPLES FOR SHIPMENT

STEP 1

RELEASING THE RETENTION BAND



Once the top accessory tray is removed, you will need to release the retention band on the shipper plug. Pull the small circle handle up to release the locking tab.



Unlatch and pull apart the straps.

STEP 2



Wearing safety gloves, remove the shipper plug.

STEP 3

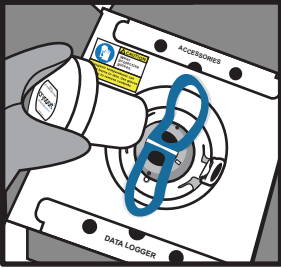


Lower the Safepak® bag into shipper and gently push down with gloved hand if necessary. **CAUTION: Vapors can escape from the chamber during loading.**

**IF THE DRY SHIPPER DOES NOT EMIT VAPOR WHEN PLUG IS REMOVED
PLEASE CONTACT CUSTOMER SERVICE IMMEDIATELY, BY CALLING (949) 470-2305 OR EMAIL CS@CRYOPORT.COM**

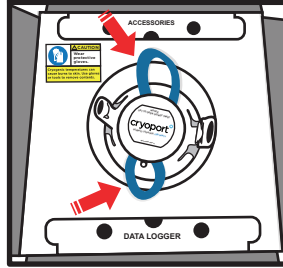
LOADING SAMPLES INTO CRYOPORT EXPRESS® COMBO SHIPPER (CXCB1)

STEP 4



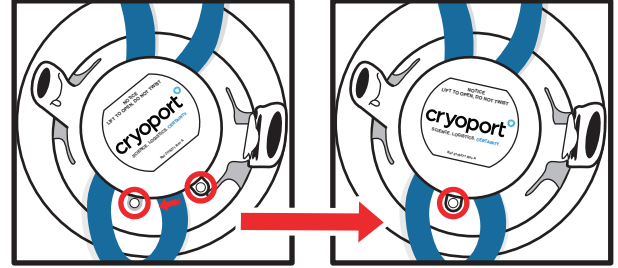
Replace the shipper plug. Shipper plug can be used to help gently insert Safepak® bag down into storage well.

STEP 5



Ensure the blue straps of the Safepak® are left outside of the shipper plug.

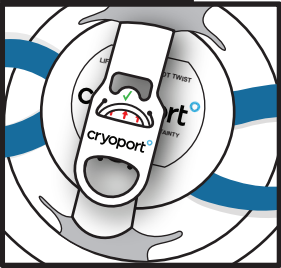
STEP 6



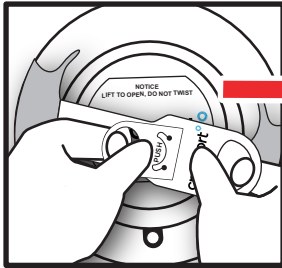
Ensure the hole on the shipper plug and the gray hole on the dewar are aligned. Turn shipper plug to align, if necessary. Also ensure the retention band handles are not overlapping the holes.

STEP 7

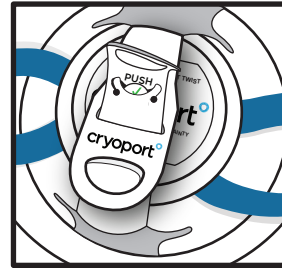
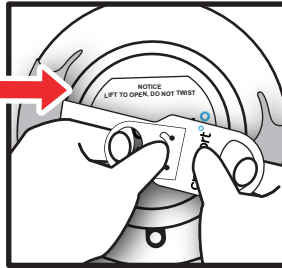
SECURING THE RETENTION BAND



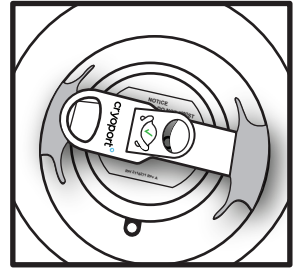
Place the smaller circle handle under the other strap and pull the handle through the slit.



Place your thumb on the word "PUSH" and pull the straps away from each other to place the tab with the word PUSH under the tab with the green check mark.

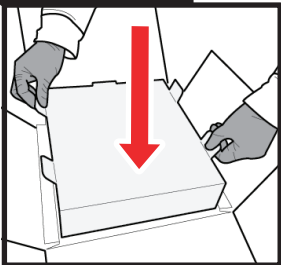


Ensure the PUSH tab is behind the green check mark tab.



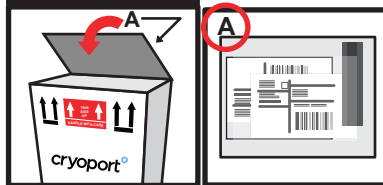
The green check mark will be visible when secured.

STEP 8



Replace the top accessory tray by pushing downward into the insert.

STEP 9



Close flaps making sure to have flap "A" showing on the outside of the white carton.

For International shipments: REMOVE AND SIGN ALL FOUR (4) COPIES OF THE COMMERCIAL INVOICES.

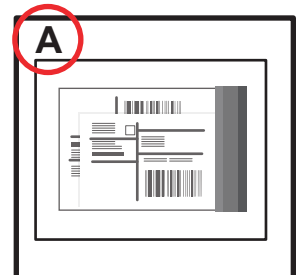
Place all four (4) signed copies of Commercial Invoices back inside shipping envelope on Flap "A" behind Air Waybill.

SECTION D

SHIPPING



Seal top of white carton with packaging tape making sure to have flap "A" showing on the outside of the white carton.



For those shipments containing regulated dangerous goods/hazardous materials, the shipper is responsible for correctly preparing the shipment according to the current International Air Transport Association (IATA) and International Civil Aviation Organization (ICAO) dangerous goods regulations. This includes correct identification, classification, packaging, dangerous goods markings and labeling as well as completion of all pertinent and required documentation. The shipper is the customer who is preparing the shipment at each leg in the transportation of the dry dewar packaging.