

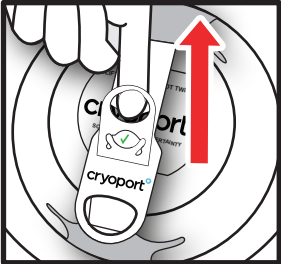
UNLOADING EGGS, SPERM & EMBRYOS FROM CRYOPORT EXPRESS® STANDARD SHIPPER (CXST1)

SECTION A

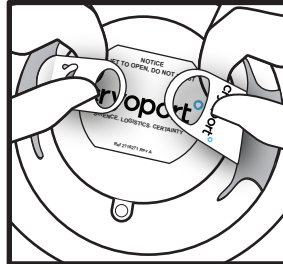
UNLOADING SAMPLES

STEP 1

RELEASING THE RETENTION BAND

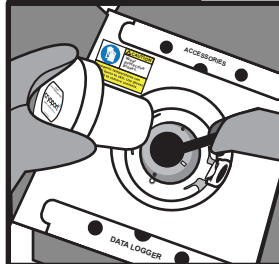


Once the white carton is open, you will need to release the retention band on the shipper plug. Pull the small circle handle up to release the locking tab.



Unlatch and pull apart the straps.

STEP 2



Wear Safety Gloves. While holding on to the black strap, remove the shipper plug. Pull shipper plug upwards and out.

STEP 3

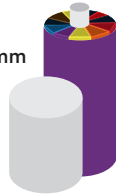


Place the shipper plug to the side. When the commodity is ready to be relocated to another cryogenic storage tank, pull up on the black strap.

STEP 4A



65mm



If the straw/commodity is loaded in a 65 mm goblet (Daisy Goblet), pull up on the black strap to expose the top of the goblet and remove the goblet.

STEP 4B



If the straw/commodity is loaded in a goblet or vial on a cane, pull up on the black strap to expose the top of the canister and remove the cane.

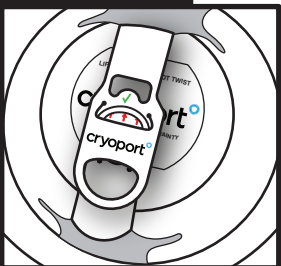
STEP 5



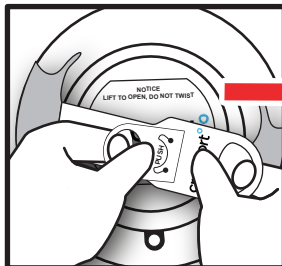
Replace the Lifter or Canister back into the dewar to be returned to Cryoport. Replace the shipper plug. Push plug fully into place.

STEP 6

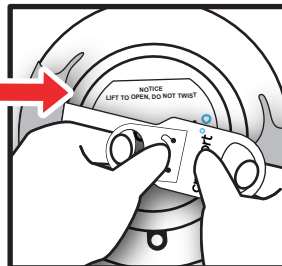
SECURING THE RETENTION BAND



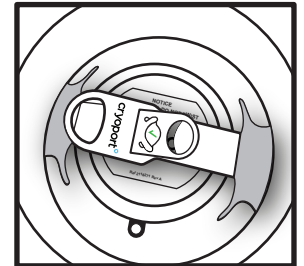
Place the smaller circle handle under the other strap and pull the handle through the slit.



Place your thumb on the word "PUSH" and pull the straps away from each other to place the tab with the word PUSH under the tab with the green check mark.



Ensure the PUSH tab is behind the green check mark tab.



The green check mark will be visible when secured.

STEP 7

If you are expecting to receive non-temperature sensitive accessories with your shipment, please see the "How to Include and Remove Accessories in the CXST1 Shipper" instructions.

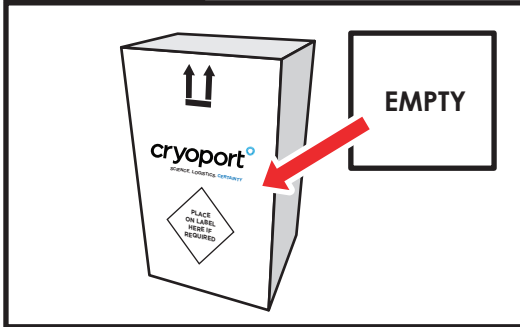
**IF THE DRY SHIPPER DOES NOT EMIT VAPOR WHEN PLUG IS REMOVED
PLEASE CONTACT CUSTOMER SERVICE IMMEDIATELY, BY CALLING (949) 470-2305 OR EMAIL CS@CRYOPORT.COM**

UNLOADING EGGS, SPERM & EMBRYOS FROM CRYOPORT EXPRESS® STANDARD SHIPPER (CXST1)

SECTION B

PACKAGING THE SHIPMENT

STEP 1



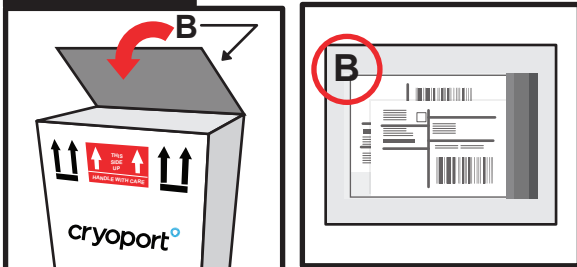
If any label was used in this area for your shipment please place the enclosed "EMPTY" label over it.

STEP 2



Remove Stop Insert from inside shipping envelope on flap "B". Throw away ONLY the Stop Insert.

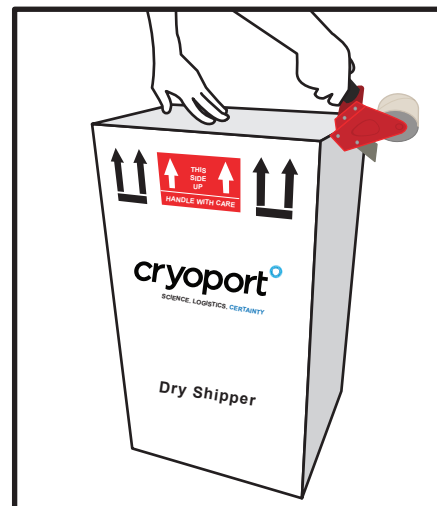
STEP 3



- Close flaps making sure to have flap "B" showing on the outside of the white carton.
- For International shipments: REMOVE AND SIGN ALL FOUR (4) COPIES OF THE COMMERCIAL INVOICES.
- Place all four (4) signed copies of Commercial Invoices back inside shipping envelope on Flap "B" behind Air Waybill.

SECTION C

SHIPPING



Seal top of white carton with packaging tape making sure to have flap "B" showing on the outside of the white carton.

Please return empty shipper to Cryoport within 24 hours.



For those shipments containing regulated dangerous goods/hazardous materials, the shipper is responsible for correctly preparing the shipment according to the current International Air Transport Association (IATA) and International Civil Aviation Organization (ICAO) dangerous goods regulations.

This includes correct identification, classification, packaging, dangerous goods markings and labeling as well as completion of all pertinent and required documentation. The shipper is the customer who is preparing the shipment at each leg in the transportation of the dry dewar packaging.