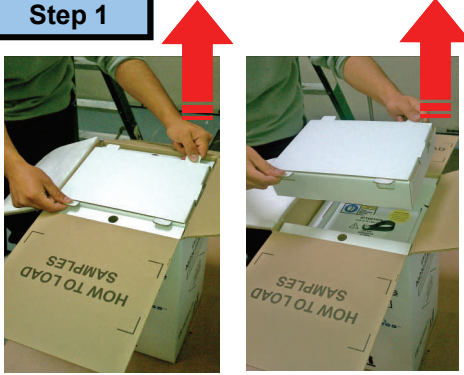


Combo Shipper: Unloading

Step 1



Remove Kit box to unload commodity.
Lift upwards on the white tabs.

Step 2



Remove the documents from the Kit box.
Dispose Kit Box when finished.

Step 3



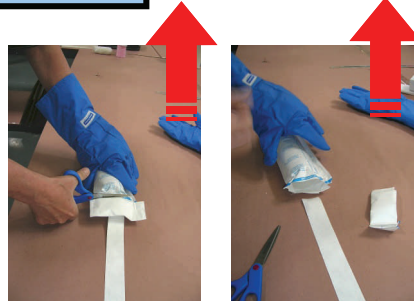
Wear Safety Gloves.
Hold shippo plug in one hand.
Hold white strap with other hand.
Pull shippo plug upwards and out.

Step 4



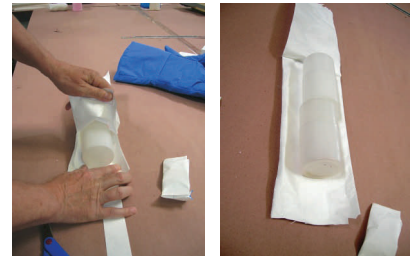
Put shippo plug to one side.
Pull upwards on white strap.
Remove sample bag completely
And place on a flat surface.

Step 5



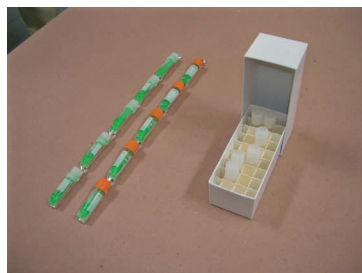
Hold bag with one gloved hand. Use
scissors to cut off end of Tyvek bag.
Remove end of bag completely to re-
veal sample container(s).

Step 6



Tear backwards on Tyvek bag.
Remove bag completely.

Step 7



Retrieve sample container.

Step 8



Replace shippo plug.
Push plug fully into place.

Combo Shipment: Unloading

Step 9



EMPTY

If any label was used in this area for your shipment please place the enclosed "EMPTY" label over it.

Step 10



This Flap "B"
Will Return
Shipper To:
cryoport



Before returning this shipper to CryoPort, please:

- ✓ Check to make certain all materials have been removed from inside of the shipper.
- ✓ Replace the Hazard label (on the side of box) with the enclosed "EMPTY" label. "EMPTY" label is inside pouch underneath this flap.
- ✓ For international shipments only, sign the enclosed Commercial Invoices (4 copies) and return to pouch.
- ✓ Remove this sheet to expose the Air Waybill for scanning.

Remove Stop Insert from inside shipping envelope on flap "B".
Throw away **ONLY** the Stop Insert.

Step 11



Close flaps making sure to have flap "B" showing on the outside of the white carton.

FOR INTERNATIONAL SHIPMENTS ONLY:

- REMOVE AND SIGN ALL FOUR (4) COPIES OF COMMERCIAL INVOICES.
- Place all four (4) signed copies of Commercial Invoices back inside shipping envelope on flap "B" behind Air Waybill.

Step 12



Seal top of white carton with packaging tape making sure to have flap "B" showing on the outside of the white carton.

**Please return
empty shipper
to CryoPort
within 24 hours.**

