

CRYOPORT EXPRESS® CRYOGENIC HV2 SHIPPING SYSTEM



LN2 Refill With Samples Inside Instructions

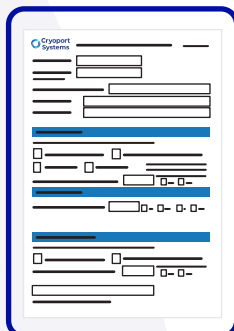
NEED HELP? CONTACT CRYOPORT SYSTEMS' CLIENT CARE AT (949) 470-2305 OR EMAIL CS@CRYOPORT.COM

Step 1



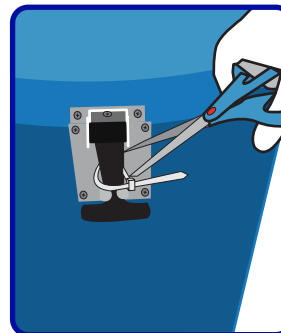
Wear the appropriate Personal Protective Equipment (PPE) when handling cryogenic shipments.

Step 2



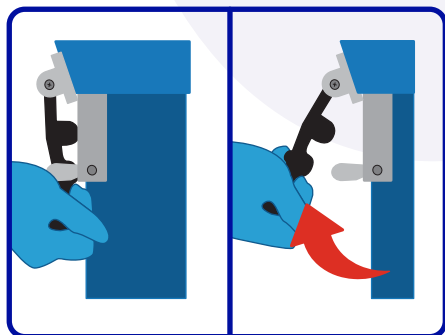
Contact Cryoport Systems' Client Care to access the In-Field Recharging Verification Form and complete Section A.

Step 3



Use scissors to remove zip ties from both rubber latches.

Step 4



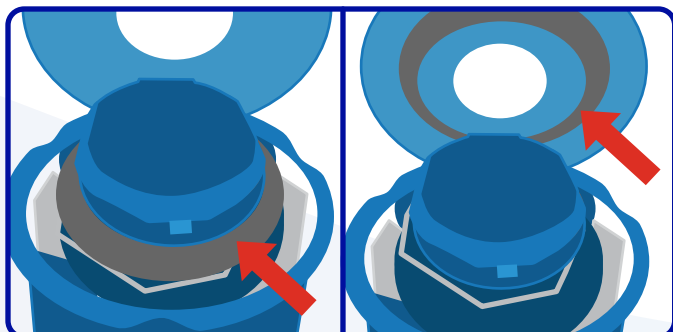
Unlatch both sides by disconnecting the black rubber handle from the bottom and pull the latch up and away from the shipping system.

Step 5



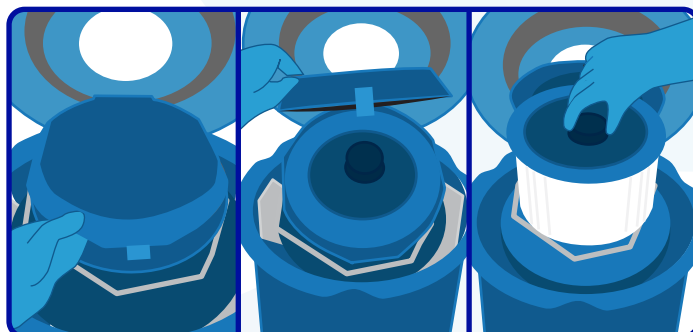
To access the dewar, open the lid and cut off the zip tie on the hinged cap with scissors.

Step 6



Remove the absorbent ring and place it on the enclosure lid.

Step 7



Open the hinged cap and pull up on the circular handle in the center to remove the vapor plug. Set the vapor plug aside, with fleece lining facing up.

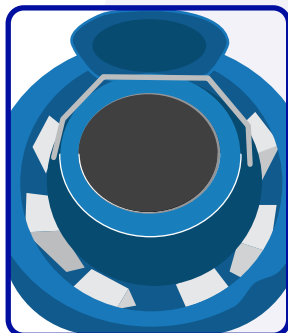
CRYOPORT EXPRESS® CRYOGENIC HV2 SHIPPING SYSTEM



LN2 Refill With Samples Inside Instructions

NEED HELP? CONTACT CRYOPORT SYSTEMS' CLIENT CARE AT (949) 470-2305 OR EMAIL CS@CRYOPORT.COM

Step 8



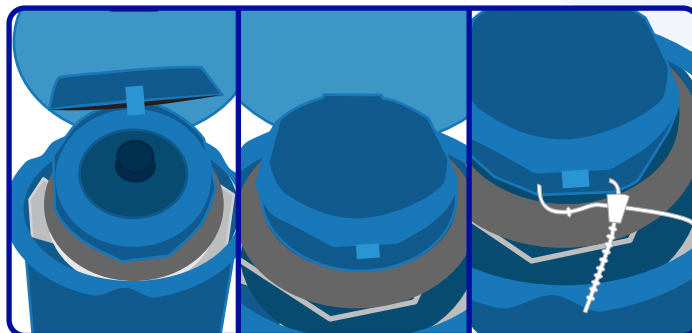
Slowly pour liquid nitrogen into the opening.

NOTE: Cryoport Client Care will provide information on the amount of LN2 to use for your specific use case.

CAUTION

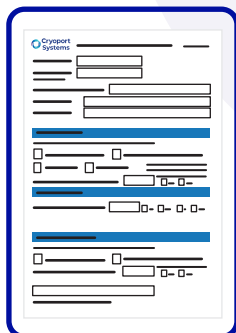
This process may expose samples directly to liquid nitrogen.

Step 9



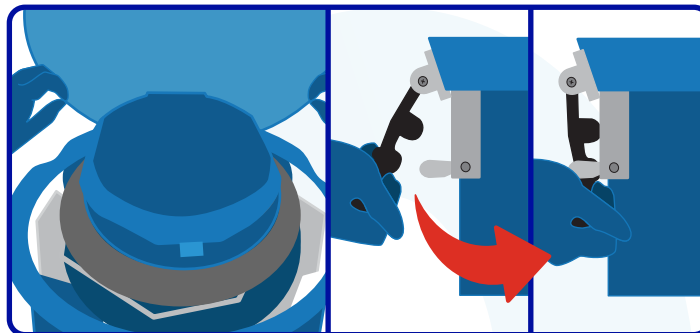
Reinsert the absorbent ring and the vapor plug. Close the hinged cap by pulling down on the lid. Secure the hinged cap with a zip tie. Let the dewar stabilize in a static position for at least 60 minutes.

Step 10



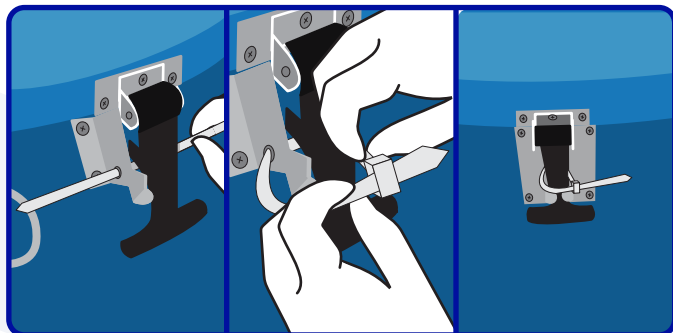
Complete Section C and D of the In-Field Recharging Verification Form.

Step 11



Close the lid and push the black rubber latch down towards the shipping system and connect it to the metal hardware. Complete this step for both latches.

Step 12



Insert the zip tie through each metal latch hole, wrap it around each latch, tighten it, and secure the lid. Do not over tighten the zip tie as it will cause breakage.