

# CRYOPORT EXPRESS® CRYOGENIC HV2 SHIPPING SYSTEM

## Shipment Loading Instructions



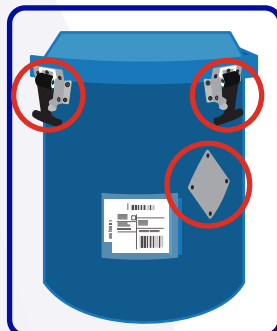
NEED HELP? CONTACT CRYOPORT SYSTEMS' CLIENT CARE AT (949) 470-2305 OR EMAIL [CS@CRYOPORT.COM](mailto:CS@CRYOPORT.COM)

### Step 1



Wear the appropriate Personal Protective Equipment (PPE) when handling cryogenic shipments.

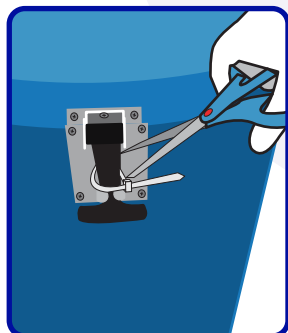
### Step 2



Once the shipping system arrives, check the enclosure and hardware for any damage that may have happened during transit.

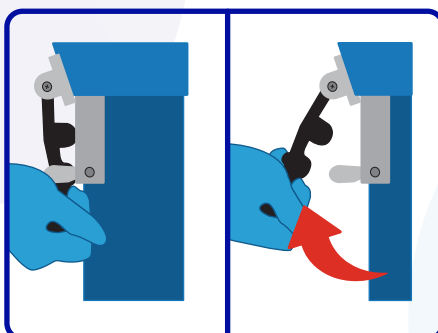
*NOTE: General Purpose (GP) shipping systems will arrive in a gray enclosure and the Advanced Therapy Shipper® (ATS) in blue.*

### Step 3



Use scissors to remove zip ties from both rubber latches.

### Step 4



Unlatch both sides by disconnecting the black rubber handle from the bottom and pull the latch up and away from the shipping system.

### Step 5



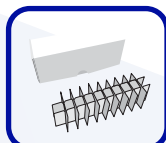
To access the dewar, open the lid and cut off the zip tie on the hinged cap with scissors.

### Step 6

Before opening the hinged cap and removing the vapor plug, secure your payload with secondary packaging and/or a compatible accessory. To download our Accessory Catalog, please visit [cryoport.com/brochures](http://cryoport.com/brochures).

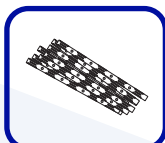
#### ACC-9043 Cryovial Box

Holds 30 (2ml) vials.



#### ACC-9033 Canes

Holds 5 (2ml) vials.



#### ACC-9053 Stainless Steel Canister

4 canisters can be loaded into the dewar.



#### ACC-9141 Cryostrap®

Use alone or with the Safepak® Systems to secure blood cassettes and cryovial boxes.



*NOTE: We recommend using Safepak® Systems for enhanced immobilization. For Category B infectious substances, please refer to the Safepak® System instructions.*

ACC-9122 (GP)  
ACC-10502 (ATS)  
Cassette Rack  
Holds 9 (9.5" x 6" x 0.5") cassettes.



SET-1000  
Safepak® Soft  
System 1800  
Holds 8 cassettes, any combination; 50 ml, 250 ml and 500 ml.

SET-1001  
Safepak® 1800  
Holds 5 standard boxes (5" x 5" x 2")



ACC-9140  
Safepak® XL  
Holds 15 Cryoport boxes (5.75" x 2" x 2"), 9 cassettes, 1 metal rack, or 5 standard boxes (5" x 5" x 2").



ACC-8905 (GP)  
ACC-10521 (ATS)  
Box Rack  
Holds 5 (5.375" x 5.375" x 2.25") or 10 (5.5" x 2" x 2") boxes.



*NOTE: Precondition commodities and accessories before loading them into the payload chamber. Incorrect preconditioning of the materials can lower hold time by 20%.*

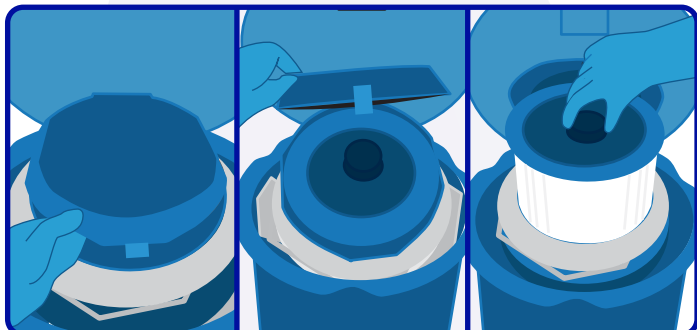
# CRYOPORT EXPRESS® CRYOGENIC HV2 SHIPPING SYSTEM



## Shipment Loading Instructions

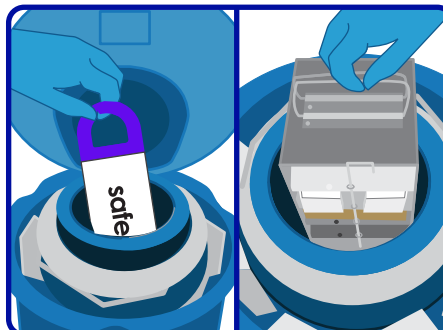
NEED HELP? CONTACT CRYOPORT SYSTEMS' CLIENT CARE AT (949) 470-2305 OR EMAIL [CS@CRYOPORT.COM](mailto:CS@CRYOPORT.COM)

### Step 7



Open the hinged cap and pull up on the circular handle in the center to remove the vapor plug. Set the vapor plug aside, with fleece lining facing up.

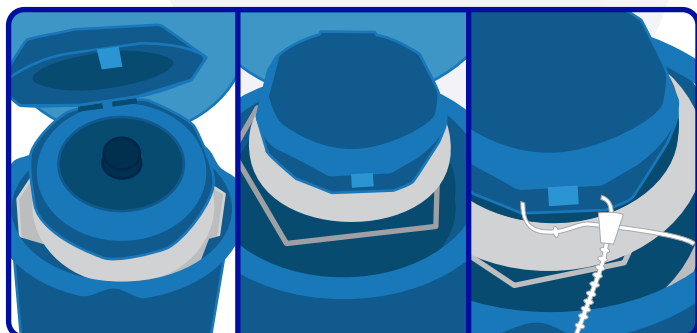
### Step 8



Slowly lower the packaged commodity into the dewar.

**NOTE:** Make sure the commodity is placed at the bottom of the dewar, and doesn't obstruct the vapor plug.

### Step 9



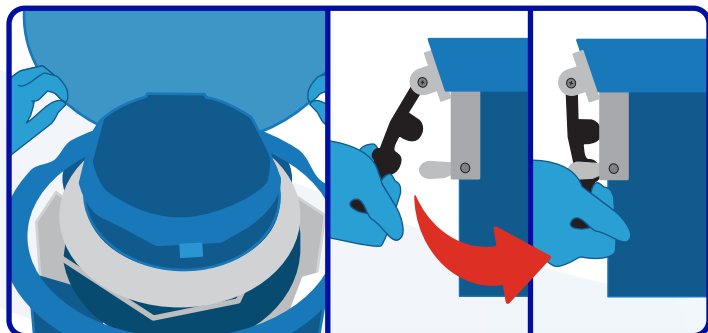
Reinsert the vapor plug. Close the hinged cap and secure it with a zip tie. Do not over tighten the zip tie as it will cause breakage.

### Step 10



Locate the shipping envelope in the clear pouch on the dewar handle. Take out the label/markings and place it on the metal panel.

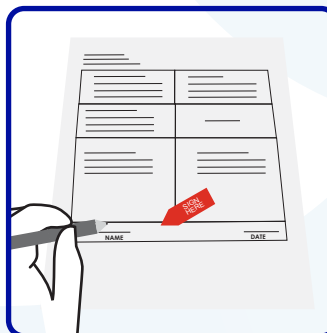
### Step 11



Close the lid and push the black rubber latch down towards the shipping system and connect it to the metal hardware. Complete this step for both latches.

### Step 12

#### *For International Shipments ONLY*



Sign and date the commercial invoices located in the Leg 2 envelope.



Return all shipping documents behind the Air Waybill, including any permits, forms, licenses, etc.

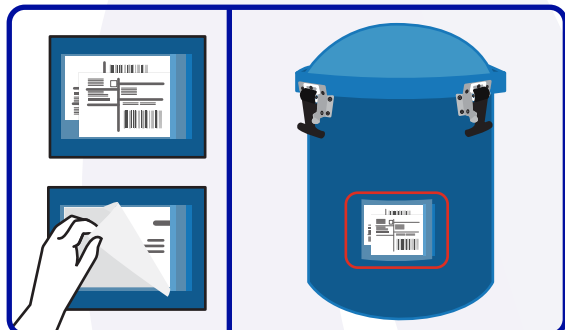
# CRYOPORT EXPRESS® CRYOGENIC HV2 SHIPPING SYSTEM

## Shipment Loading Instructions



NEED HELP? CONTACT CRYOPORT SYSTEMS' CLIENT CARE AT (949) 470-2305 OR EMAIL [CS@CRYOPORT.COM](mailto:CS@CRYOPORT.COM)

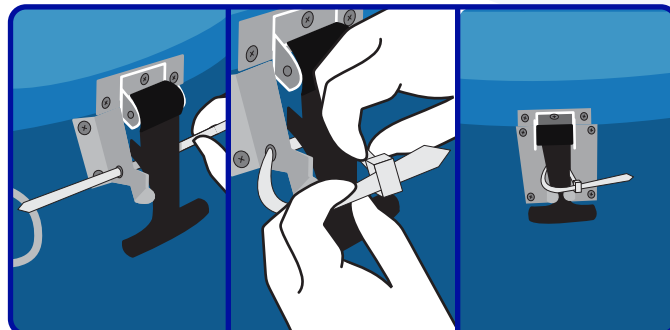
### Step 13



Pack the necessary documents into the Leg 2 envelope, with the air waybill on top. Then seal the envelope, remove the sticker backing, and place it on the metal plate.

**NOTE:** Documents will include the air waybill and the QA certification (if necessary).

### Step 14



Insert the zip tie through each metal latch hole, wrap it around each latch, tighten it, and secure the lid. Do not over tighten the zip tie as it will cause breakage.