

CRYOPORT EXPRESS® CRYOGENIC CBI SHIPPING SYSTEM

Shipment Loading Instructions



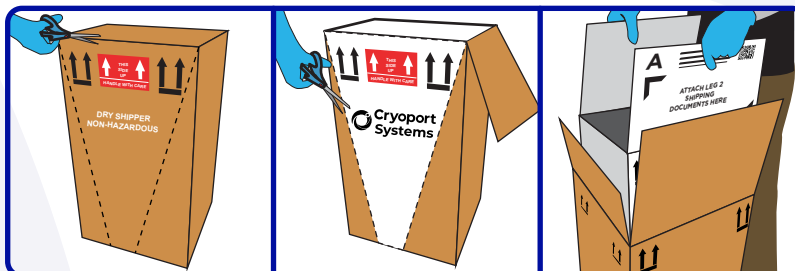
NEED HELP? CONTACT CRYOPORT SYSTEMS' CLIENT CARE AT (949) 470-2305 OR EMAIL CS@CRYOPORT.COM

Step 1

Be sure to wear the appropriate personal protective equipment (PPE) when handling cryogenic shipments.



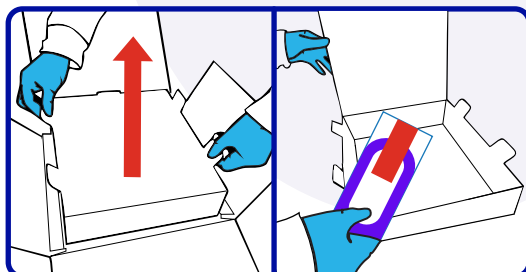
Step 2



Carefully cut the top of the outer brown box. Find the perforated marks along the front of the outer brown box and tear along the perforation from top to bottom. Once that is complete, remove the inner white box by pulling the two white box flaps.

NOTE: Check the shipping system for any damage that may have happened during transit.

Step 3

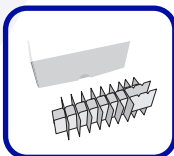


Remove the Combo Kit Box by lifting the white tabs up and away from the corrugated box. Take out the prepackaged accessories and any relevant documents.

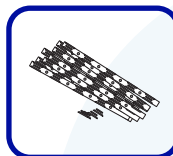
Step 4

See our Accessory Catalog to secure your payload with secondary packaging and/or a compatible accessory: cryoport.com/brochures.

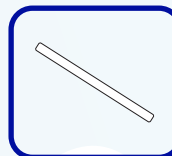
ACC-9043
Cryovial Box
Holds 30 (2ml) vials.



ACC-9033
Canes
Holds 5 (2ml) vials.



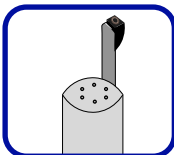
ACC-9052
Cane Sleeve
Holds a cane.



ACC-9149
Cannister
Holds 14 canes.



ACC-8920
2 Goblets with Lifter
2.5" D x 4.25" H.

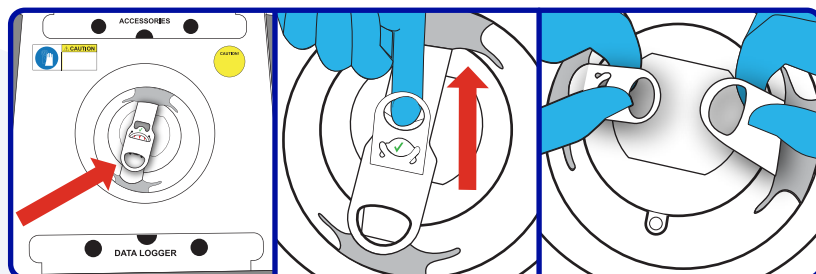


ACC-9139
Safepak®
Holds 15 canes, 2 goblets (65mm), or 2 Cryoport cryovial boxes (5.75" x 2" x 2").



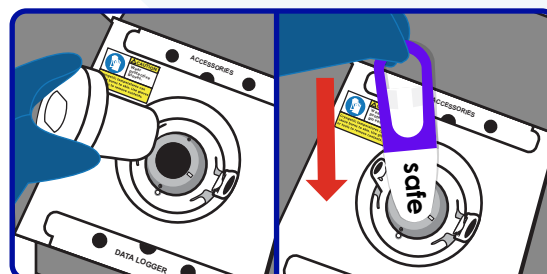
NOTE: We recommend using a Safepak® bag for enhanced immobilization. For Category B infectious substances, please refer to the Safepak® System instructions.

Step 5



Locate the retention band featured above the vapor plug. Pull the small circular handle upward to release the retention band's locking tab. Then unlatch and separate the straps.

Step 6



Remove the vapor plug and set it aside with the fleece lining facing up. Carefully lower the packaged commodity into the shipping system and gently push down if necessary.

NOTE: Vapors can escape from the chamber during loading.

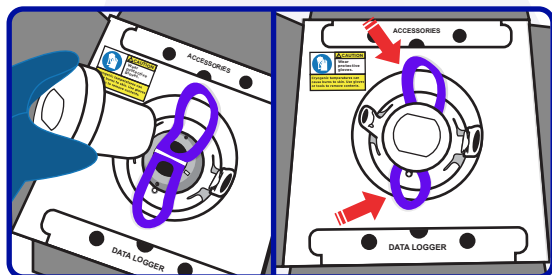
CRYOPORT EXPRESS® CRYOGENIC CBI SHIPPING SYSTEM

Shipment Loading Instructions



NEED HELP? CONTACT CRYOPORT SYSTEMS' CLIENT CARE AT (949) 470-2305 OR EMAIL CS@CRYOPORT.COM

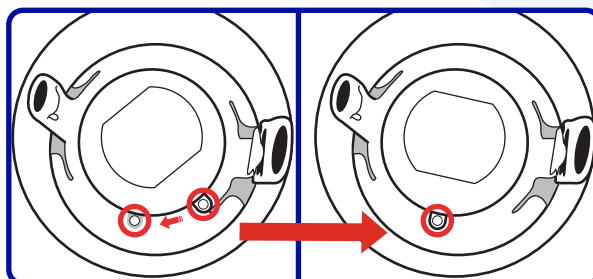
Step 7



Reinsert the vapor plug. Ensure that the purple straps of the Safepak® are left outside of the vapor plug.

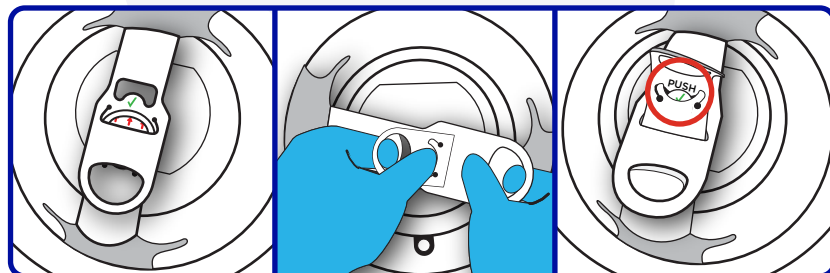
NOTE: Vapor plug can be used to gently push down the Safepak® bag.

Step 8



Ensure the tab on the vapor plug aligns with the gray tab on the dewar.

Step 9

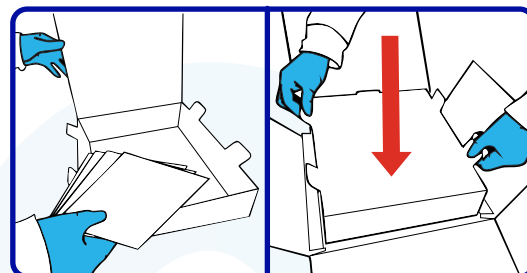


Place the smaller circular handle under the other strap and push through the slit.

Press your thumb on the "PUSH" tab and slide the smaller strap through it, underneath the green check mark.

Place the "PUSH" tab behind the green check mark tab. The green check mark should be visible when secured.

Step 10



Place additional documents and non-temperature sensitive accessories into the tray. Then push the top tray back into the insert.

NOTE: If needed, add padding to secure non-temperature sensitive accessories in the tray.

Step 11 For International Shipments ONLY

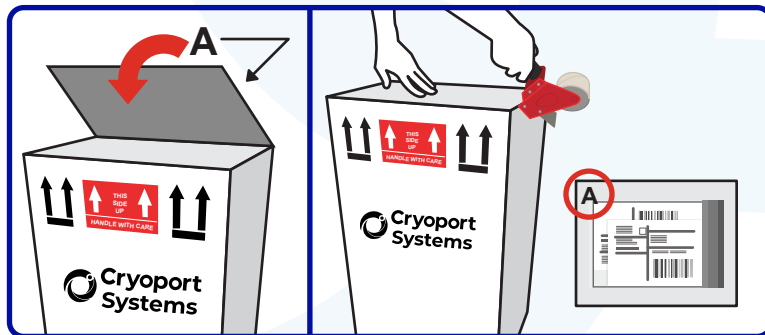


Sign and date the commercial invoices located in the Leg 2 envelope.



Return all shipping documents inside shipping envelope on Flap "A," behind the Air Waybill, including any permits, forms, licenses, etc.

Step 12



Close and seal the top of the box with packaging tape ensuring that Flap "A" is visible on the outside of the shipping system. The sealed envelope should be placed in the designated area on Flap "A".