

CRYOPORT EXPRESS® CRYOGENIC CBI SHIPPING SYSTEM



Shipment Unloading Instructions

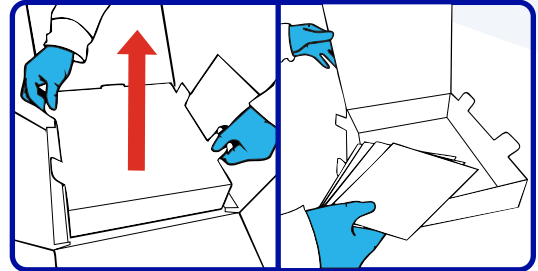
NEED HELP? CONTACT CRYOPORT SYSTEMS' CLIENT CARE AT (949) 470-2305 OR EMAIL CS@CRYOPORT.COM

Step 1

Be sure to wear the appropriate personal protective equipment (PPE) when handling cryogenic shipments.

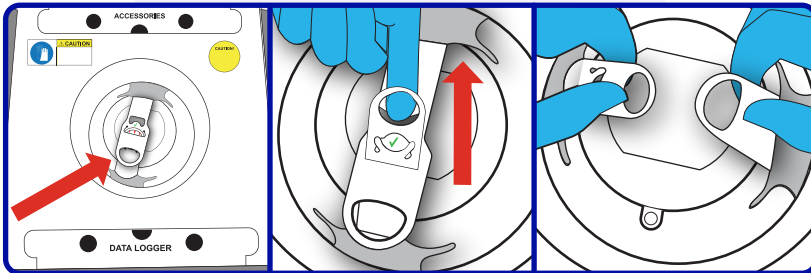


Step 2



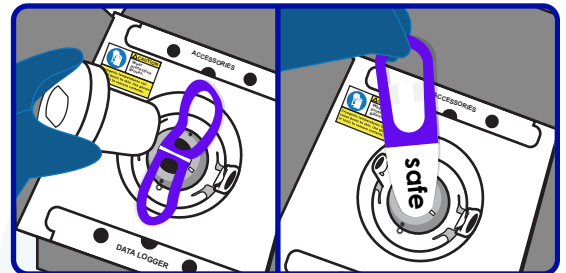
Remove the Combo Kit Box by lifting the white tabs up and away from the corrugated box. Make sure to remove all documents and non-temperature sensitive items from the accessory tray.

Step 3



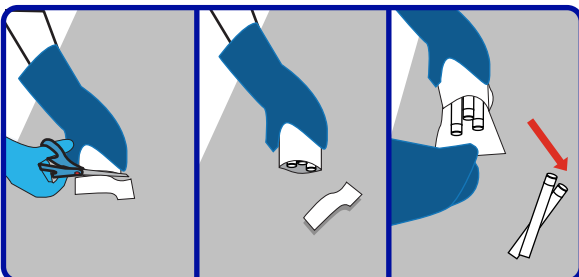
Locate the retention band featured above the vapor plug. Pull the small circular handle upward to release the retention band's locking tab. Then unlatch and separate the straps.

Step 4



Remove the vapor plug and set it aside with the fleece lining facing up. Carefully lift the packaged commodity out of the shipping system and place it on a flat surface.

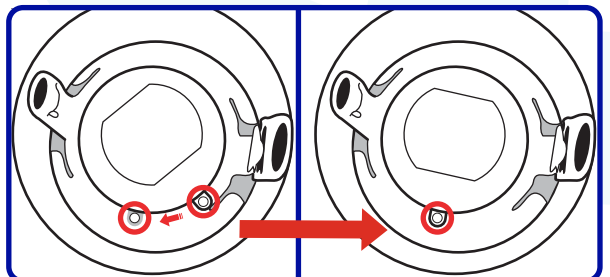
Step 5 *For Safepak® Systems ONLY*



Use scissors to cut off the end of the Safepak® bag. Remove the contents and discard the bag. Reinsert the vapor plug and gently push it down into place.

WARNING! Do not leave any samples or used packaging inside of the shipping system.

Step 6



Ensure the tab on the vapor plug aligns with the gray tab on the dewar.

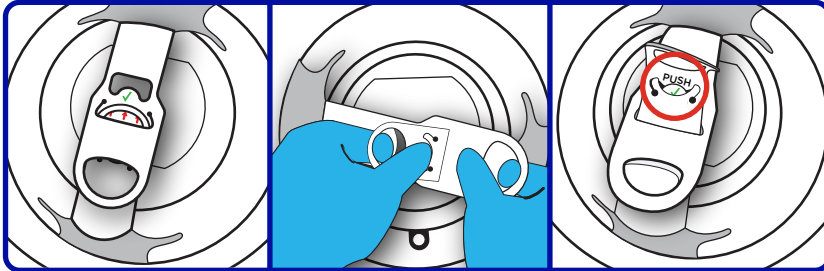
CRYOPORT EXPRESS® CRYOGENIC CBI SHIPPING SYSTEM



Shipment Unloading Instructions

NEED HELP? CONTACT CRYOPORT SYSTEMS' CLIENT CARE AT (949) 470-2305 OR EMAIL CS@CRYOPORT.COM

Step 7



Place the smaller circular handle under the other strap and push through the slit.

Press your thumb on the "PUSH" tab and slide the smaller strap through it, underneath the green check mark.

Place the "PUSH" tab behind the green check mark tab. The green check mark should be visible when secured.

Step 8



Place the enclosed "EMPTY" label on the diamond. Remove the WARNING insert from inside of the shipping envelope on flap "B". Only throw away the WARNING insert.

Step 9

For International Shipments ONLY

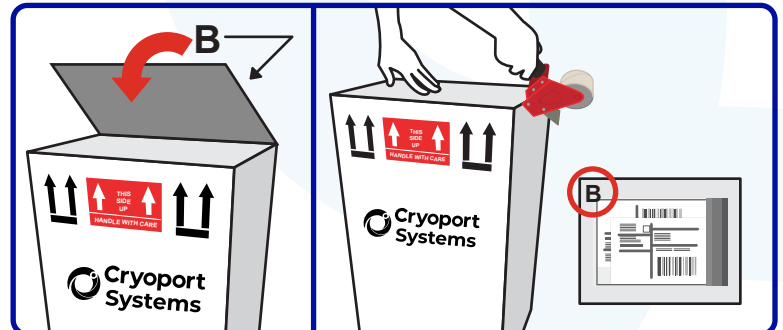


Sign and date the commercial invoices located in the shipping envelope.



Return all shipping documents inside shipping envelope on Flap "B," behind the Air Waybill, including any permits, forms, licenses, etc.

Step 10



Close and seal the top of the box with packaging tape ensuring that Flap "B" is visible on the outside of the shipping system. The sealed envelope should be placed in the designated area on Flap "B."

NOTE: Please return empty shipping systems to Cryoport within 24 hours.