

CRYOPORT EXPRESS® CRYOGENIC ST1 SHIPPING SYSTEM



LN2 Refill With Samples Inside Instructions

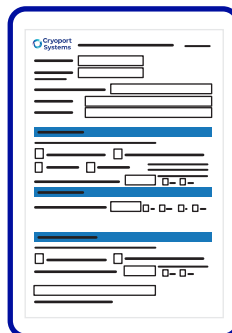
NEED HELP? CONTACT CRYOPORT SYSTEMS' CLIENT CARE AT (949) 470-2305 OR EMAIL CS@CRYOPORT.COM

Step 1



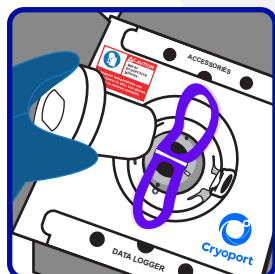
Wear the appropriate Personal Protective Equipment (PPE) when handling cryogenic shipments.

Step 2



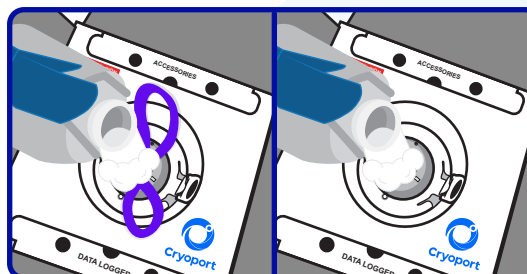
Contact Cryoport Systems' Client Care to access the In-Field Recharging Verification Form and complete Section A.

Step 4



Carefully remove the vapor plug and set it aside with the fleece lining facing up. If using a Safepak® Bag, ensure the purple Safepak® straps stay outside of the dewar at all times.

Step 5



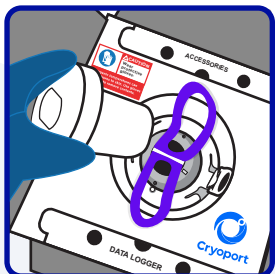
NOTE: Avoid spilling LN2 on the data logger.

CAUTION

This process may expose samples directly to liquid nitrogen.

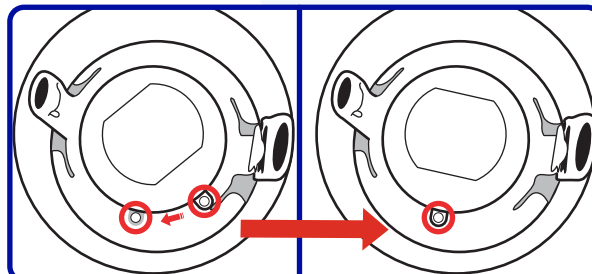
Cryoport Client Care will provide information on the amount of LN2 to use for your specific use case. Slowly pour liquid nitrogen into the opening.

Step 6



Reinsert the vapor plug. Let the shipping system stabilize in static position for at least 30 minutes. Make sure the Safepak® straps are left outside of the shipping system.

Step 7



Ensure the tab on the vapor plug aligns with the gray tab on the dewar.

CRYOPORT EXPRESS® CRYOGENIC ST1 SHIPPING SYSTEM



LN2 Refill With Samples Inside Instructions

NEED HELP? CONTACT CRYOPORT SYSTEMS' CLIENT CARE AT (949) 470-2305 OR EMAIL CS@CRYOPORT.COM

Step 8

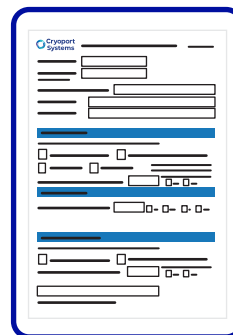


Place the smaller circular handle under the other strap and push through the slit.

Press your thumb on the "PUSH" tab and slide the smaller strap through it, underneath the green check mark.

Place the "PUSH" tab behind the green check mark tab. The green check mark should be visible when secured.

Step 9



Complete Section C and D of the In-Field Recharging Verification Form.