

CRYOPORT EXPRESS® CRYOGENIC STI SHIPPING SYSTEM



Eggs, Sperm, and Embryos Shipment Loading Instructions

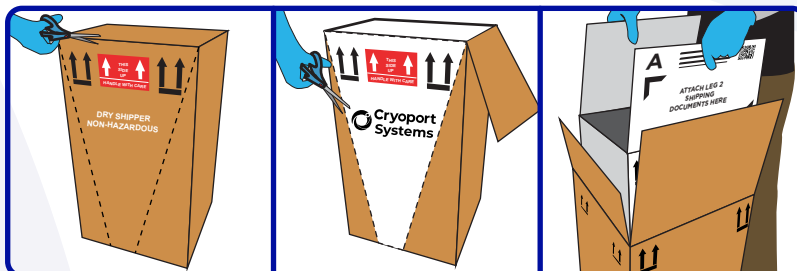
NEED HELP? CONTACT CRYOPORT SYSTEMS' CLIENT CARE AT (949) 470-2305 OR EMAIL CS@CRYOPORT.COM

Step 1

Be sure to wear the appropriate personal protective equipment (PPE) when handling cryogenic shipments.



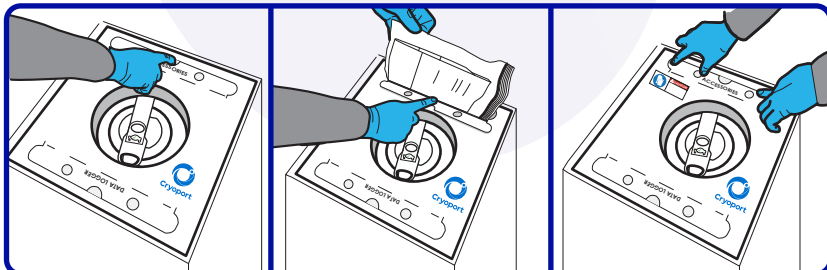
Step 2



Carefully cut the top of the outer brown box. Find the perforated marks along the front of the outer brown box and tear along the perforation from top to bottom. Once that is complete, remove the inner white box by pulling the two white box flaps.

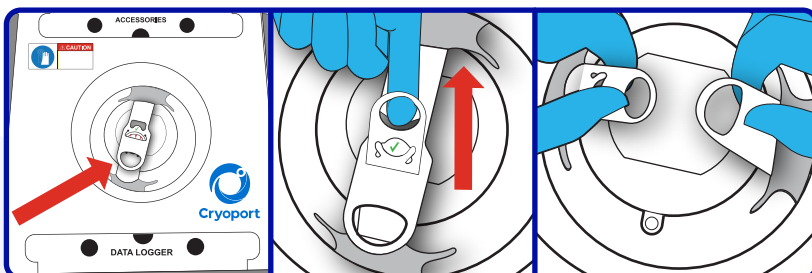
NOTE: Check the shipping system for any damage that may have happened during transit.

Step 3



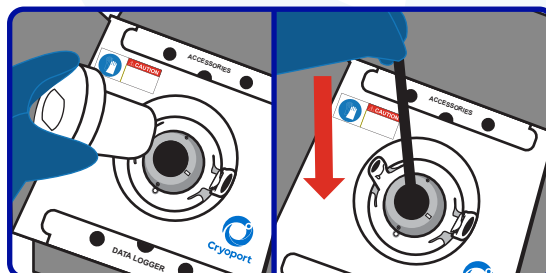
Carefully open the Accessories compartment by pulling back on the tab. Remove any non-temperature sensitive accessories from the compartment and set them aside. Close the Accessories compartment by pushing down on the tab.

Step 4



Locate the retention band featured above the vapor plug. Pull the small circular handle upward to release the retention band's locking tab. Then unlatch and separate the straps.

Step 5



Remove the vapor plug and set it aside with the fleece lining facing up. Pull the strap up to raise the canister or the lifter.

NOTE: Vapors can escape from the chamber during loading.

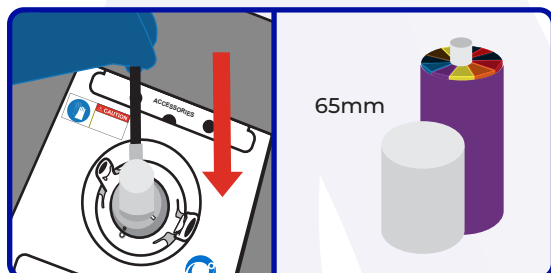
CRYOPORT EXPRESS® CRYOGENIC STI SHIPPING SYSTEM



Eggs, Sperm, and Embryos Shipment Loading Instructions

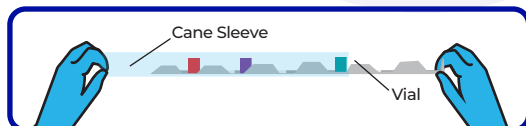
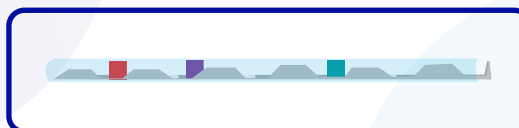
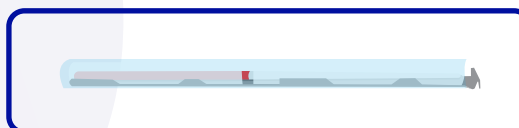
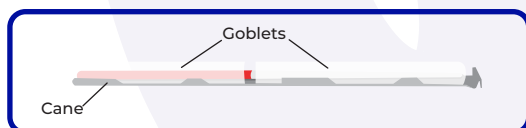
NEED HELP? CONTACT CRYOPORT SYSTEMS' CLIENT CARE AT (949) 470-2305 OR EMAIL CS@CRYOPORT.COM

Step 6 *Daisy Goblet 65mm ONLY*



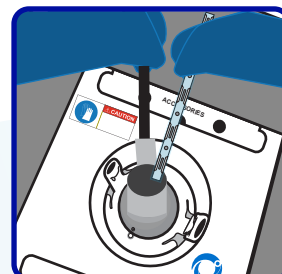
When using a 65 mm goblet (Daisy Goblet), place it onto the lifter and lower the commodity in the dewar.

Step 7 *Goblet or Vial on Cane ONLY*

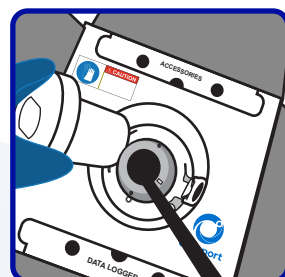


If the commodity is loaded into a goblet on a cane, a second inverted empty goblet should be set on top to secure the cane. When shipping vials, use a cane sleeve to cover and secure them. Carefully lower the commodity into the dewar.

NOTE: Canes may come loose if not properly secured.

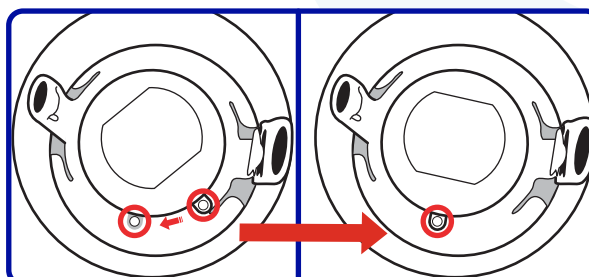


Step 8



Reinsert the vapor plug and ensure that the black strap of the lifter is left outside of the vapor plug.

Step 9



Ensure the tab on the vapor plug aligns with the gray tab on the dewar.

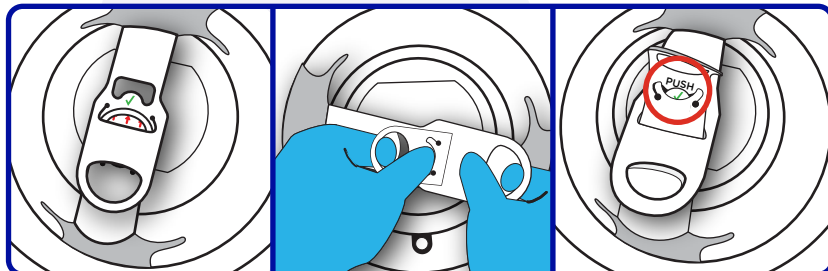
CRYOPORT EXPRESS® CRYOGENIC STI SHIPPING SYSTEM



Eggs, Sperm, and Embryos Shipment Loading Instructions

NEED HELP? CONTACT CRYOPORT SYSTEMS' CLIENT CARE AT (949) 470-2305 OR EMAIL CS@CRYOPORT.COM

Step 10



Place the smaller circular handle under the other strap and push through the slit.

Press your thumb on the "PUSH" tab and slide the smaller strap through it, underneath the green check mark.

Place the "PUSH" tab behind the green check mark tab. The green check mark should be visible when secured.

Step 11 *For International Shipments ONLY*

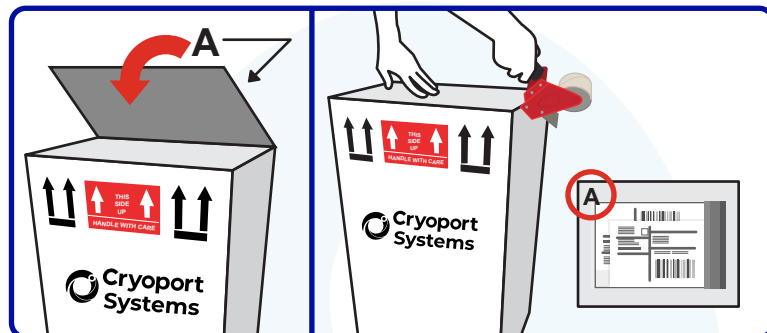


Sign and date the commercial invoices located in the Leg 2 envelope.



Return all shipping documents inside shipping envelope on Flap "A," behind the Air Waybill, including any permits, forms, licenses, etc.

Step 12



Close and seal the top of the box with packaging tape ensuring that Flap "A" is visible on the outside of the shipping system. The sealed envelope should be placed in the designated area on Flap "A".