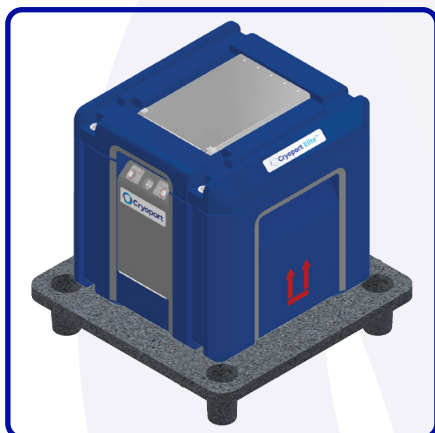


# CRYOPORT ELITE™ ULTRA COLD (56L) PALLETIZATION INSTRUCTIONS

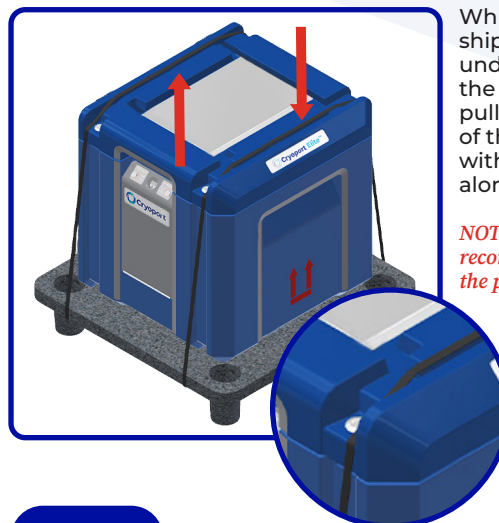


## Step 1



Place the shipping system in the center of the pallet (P/N: 12688).

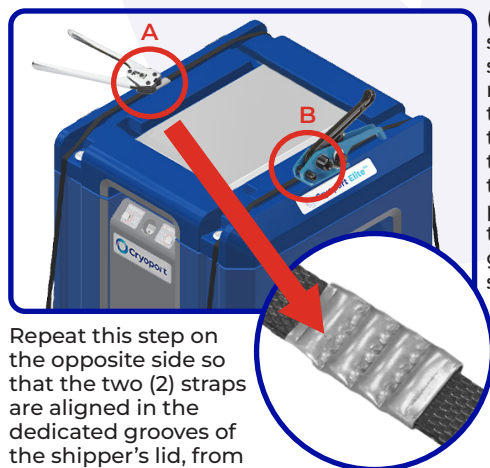
## Step 2



While facing the front of the shipper, feed the strap underneath the pallet towards the back of the shipper. Then pull the strap around the front of the shipper to position it within the designated grooves along the lid.

**NOTE:** Nylon straps are recommended to strap the shipper to the pallet.

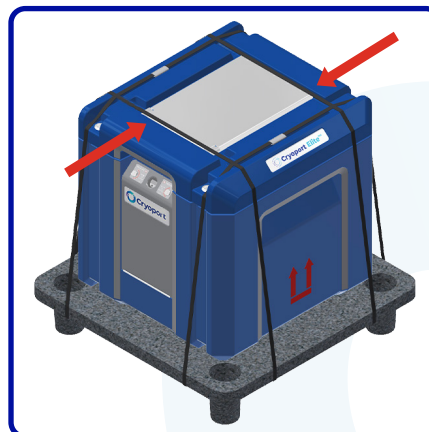
## Step 3



(A) Provide enough slack for the metal sealer, cut the strap if needed, then crimp the metal sealer onto the strap. (B) Use the tensioner to tighten the strap while positioning it within the designated grooves along the shipper's lid.

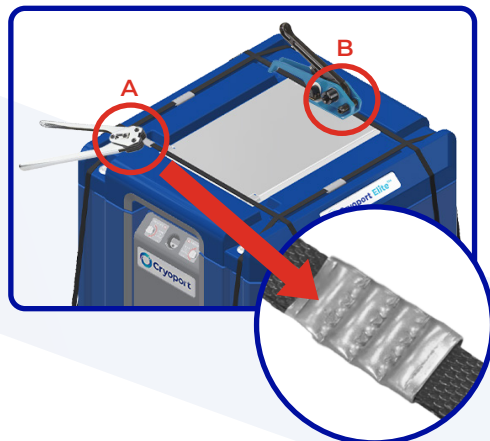
Repeat this step on the opposite side so that the two (2) straps are aligned in the dedicated grooves of the shipper's lid, from front to back.

## Step 4



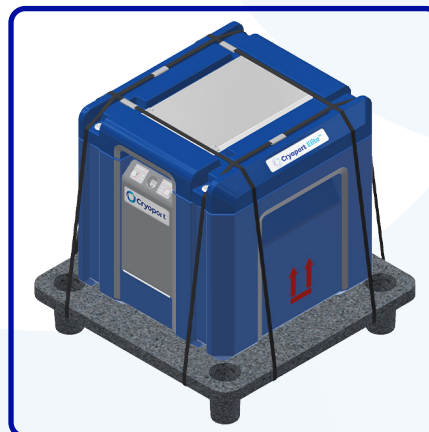
The second set of straps will be placed perpendicularly across the first set of straps. Feed the straps underneath the pallet from side to side. Make sure the placement of the straps does not obstruct the document cover, preventing accessibility.

## Step 5



(A) Cut the straps if needed, and provide enough slack for the metal sealers. (B) Crimp the metal sealers onto the straps and use the tensioner to tighten the straps.

## Step 6



The shipping system is ready for pickup once the palletization process is complete.

**NOTE:** Dimensions of the shipper on the pallet: 30" x 30" x 29.35" (76.2cm x 76.2cm x 74.55cm)