

CRYOPORT EXPRESS® CRYOGENIC ST1 & CB1 SHIPPING SYSTEMS



How to Manually Upload Smartpak II® Data Instructions

NEED HELP? CONTACT CRYOPORT SYSTEMS' CLIENT CARE AT (949) 470-2305 OR EMAIL CS@CRYOPORT.COM

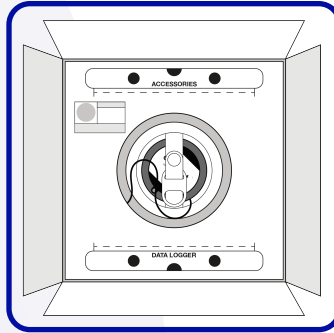
When connected to a stable cellular network, the Smartpak II® defaults to recording and transmitting sensor data at 5-minute and 60-minute intervals. The following steps allow users to manually upload Smartpak II® device data.

Step 1



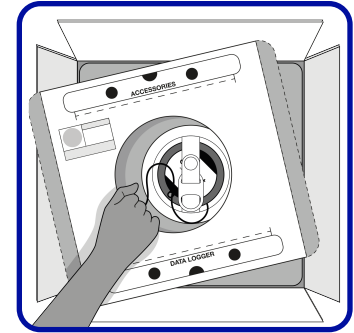
Wear the appropriate Personal Protective Equipment (PPE) when handling temperature sensitive shipments.

Step 2



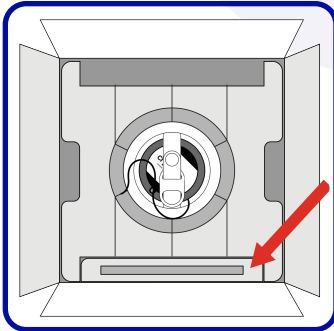
Open the box and remove the top cover. If utilizing the CB1 Shipping System, remove the Combo Kit Box first.

Step 3



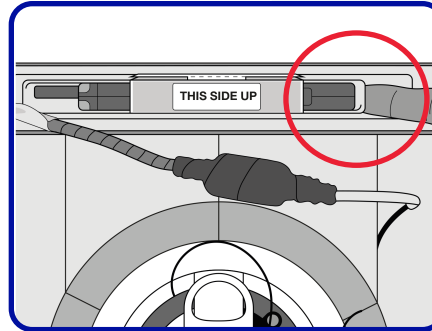
Remove the top cover.

Step 4



Locate the Smartpak II® in the block insert.

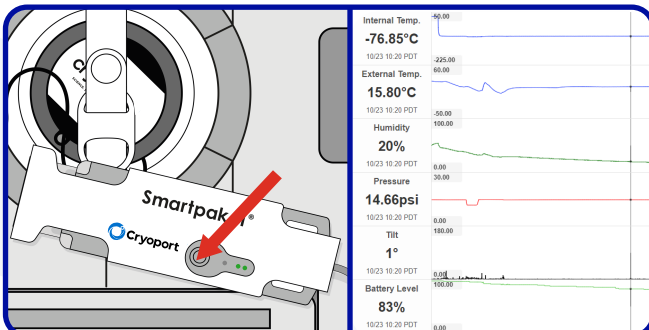
Step 5



Carefully remove the Smartpak II® from the end that is NOT attached to the cable.

NOTE: When the Smartpak II® is removed and its orientation changes, a tilt event will occur.

Step 6



To manually upload the Smartpak II® data, tap and release the touch sensitive button. If the network LED light doesn't turn on after 5 seconds, tap and release the touch sensitive button again and repeat until you see a green light. After 5 minutes, refresh your Live View® link to see the stored data.

If the shipment data does not appear, please contact Cryoport Systems' Client Care at (949) 470-2305.

NOTE: The network LED light may be "blinking" red. The blinking may last one minute (depending on cellular coverage) before becoming solid green.

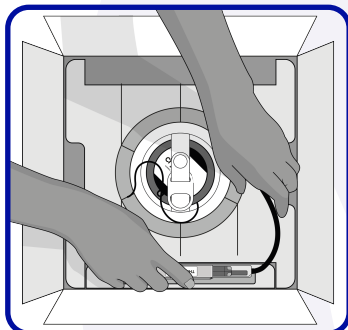
CRYOPORT EXPRESS® CRYOGENIC ST1 & CB1 SHIPPING SYSTEMS



How to Manually Upload Smartpak II® Data Instructions

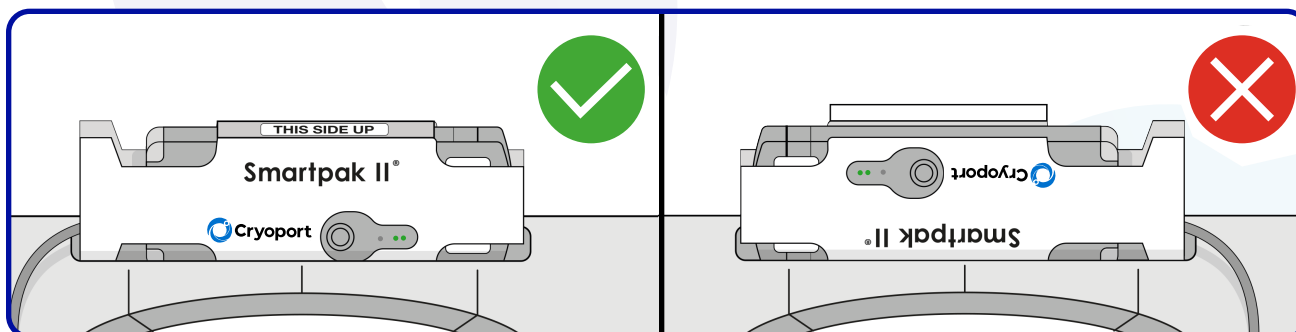
NEED HELP? CONTACT CRYOPORT SYSTEMS' CLIENT CARE AT (949) 470-2305 OR EMAIL CS@CRYOPORT.COM

Step 7



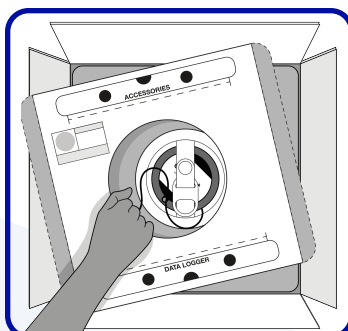
Insert the Smartpak II® back into the block insert.

Step 8



Ensure the mini USB cable/thermocouple is positioned on top with the print sleeve "This Side Up" facing up.

Step 9



Replace the top cover.