

CRYOPORT EXPRESS® CRYOGENIC HV2 SHIPPING SYSTEM



LN2 Refill Without Samples Inside Instructions

NEED HELP? CONTACT CRYOPORT SYSTEMS' CLIENT CARE AT +1 (949) 470-2305 OR EMAIL CS@CRYOPORT.COM

Step 1



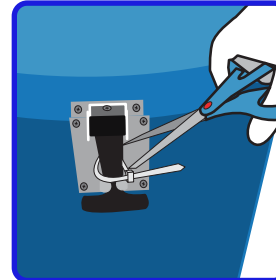
Wear the appropriate Personal Protective Equipment (PPE) when handling cryogenic shipments.

Step 2



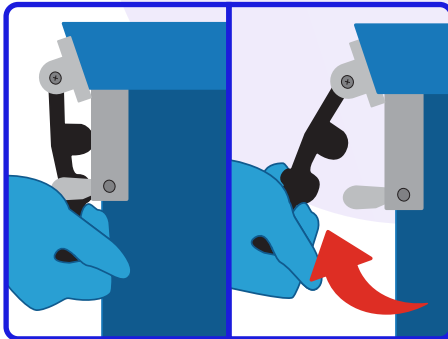
Contact Cryoport Systems' Client Care to access the In-Field Recharging Verification Form and complete Section A.

Step 3



Use scissors to remove zip ties from both rubber latches.

Step 4



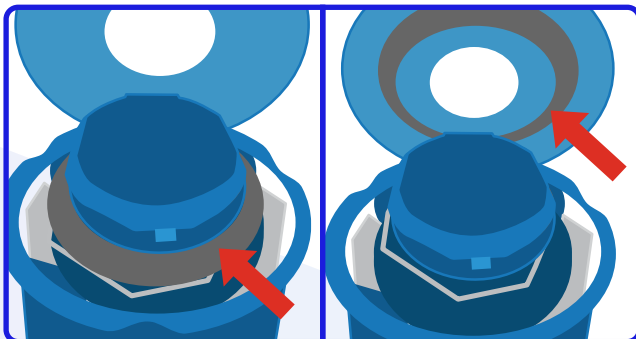
Unlatch both sides by disconnecting the black rubber handle from the bottom and pull the latch up and away from the shipping system.

Step 5



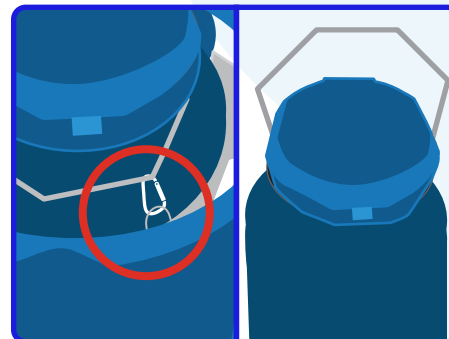
To access the dewar, open the lid and cut off the zip tie on the hinged cap with scissors.

Step 6



Remove the absorbent ring and place it on the enclosure lid.

Step 7



Disconnect the dewar from the enclosure by unlatching the carabiner behind the dewar. Remove the dewar by using the metal handle.

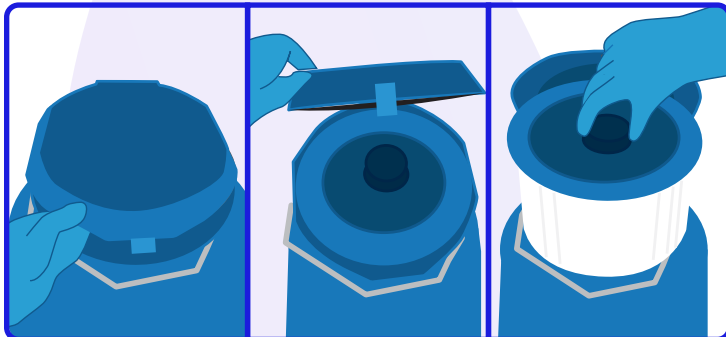
CRYOPORT EXPRESS® CRYOGENIC HV2 SHIPPING SYSTEM



LN2 Refill Without Samples Inside Instructions

NEED HELP? CONTACT CRYOPORT SYSTEMS' CLIENT CARE AT +1 (949) 470-2305 OR EMAIL CS@CRYOPORT.COM

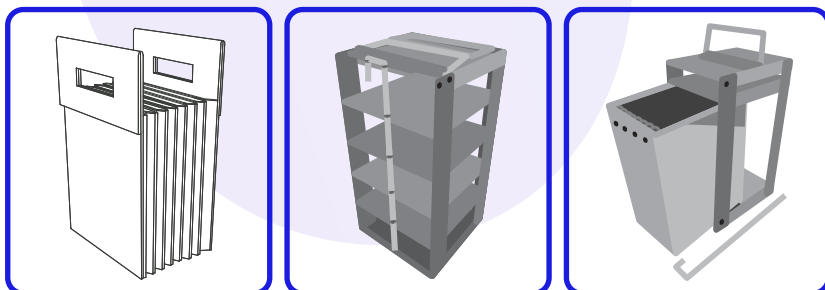
Step 8



Open the hinged cap and pull up on the circular handle in the center to remove the vapor plug. Set the vapor plug aside, with fleece lining facing up.

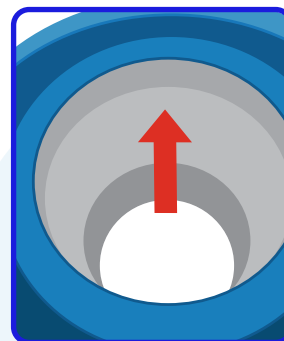
Step 9

If accessories are in the dewar:



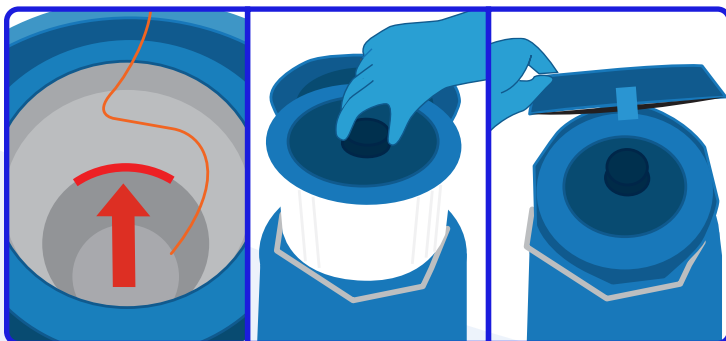
Remove all accessories from the dewar before proceeding.

Step 10



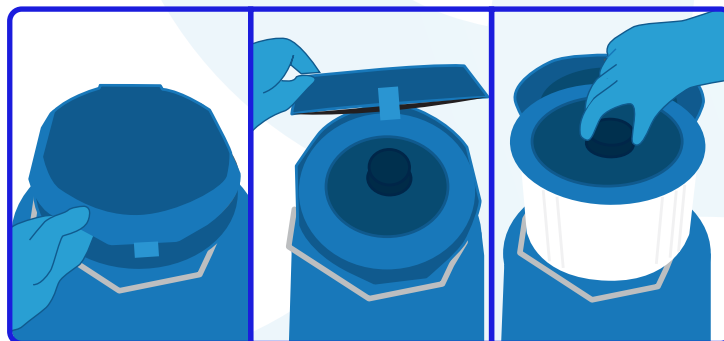
Remove the absorbent pad from inside of the dewar and place it on the enclosure lid.

Step 11



Slowly pour liquid nitrogen (LN2) into the opening. Fill the dewar up to the bottom of the neck tube. Reinsert the vapor plug. Close the hinged cap by pulling down on the lid. Let the dewar stabilize in a static position for at least 60 minutes.

Step 12



Once the dewar has stabilized, open the hinged cap and pull up on the circular handle in the center to remove the vapor plug. Set the vapor plug aside, with fleece lining face up.

CRYOPORT EXPRESS® CRYOGENIC HV2 SHIPPING SYSTEM



LN2 Refill Without Samples Inside Instructions

NEED HELP? CONTACT CRYOPORT SYSTEMS' CLIENT CARE AT +1 (949) 470-2305 OR EMAIL CS@CRYOPORT.COM

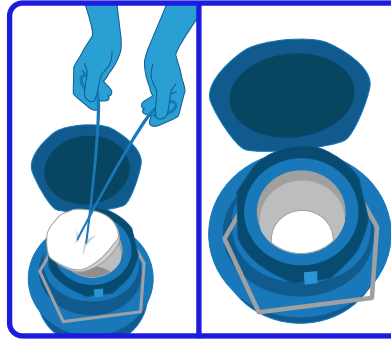
Step 13



Safely pour the excess LN2 into a compatible LN2 container.

NOTE: To avoid pinch points lift the dewar properly (as shown) and not by the handle. This process may take two people to complete. Follow local safety regulations associated with proper lifting.

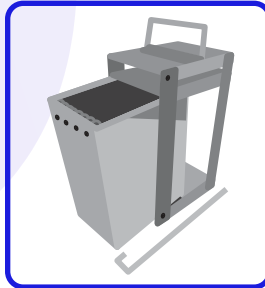
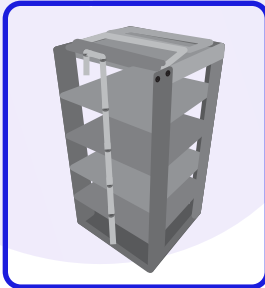
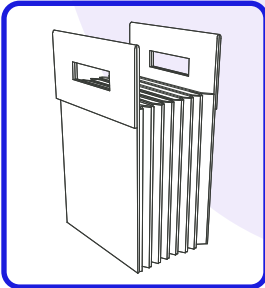
Step 14



Use the proper PPE to reinsert the absorbent pad and place it at the bottom of the dewar.

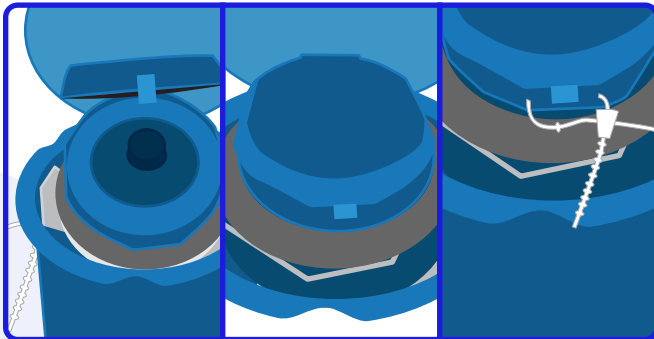
Step 15

Reinsert accessories in the dewar:



If using a SoftRack™, a metal cassette rack, or a metal cryovial rack, put it back in the dewar before proceeding.

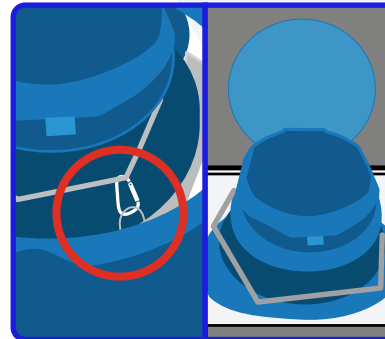
Step 16



Reinsert the absorbent ring and the vapor plug. Close the hinged cap, and secure it with a zip tie. Do not overtighten the zip tie as it will cause breakage.

NOTE: If a serialized zip tie is present, record the serialized number on all necessary documentation.

Step 17



Carefully place the dewar back into the enclosure and reconnect the dewar by latching the carabiner behind the dewar.

NOTE: Follow local safety regulations associated with proper lifting.

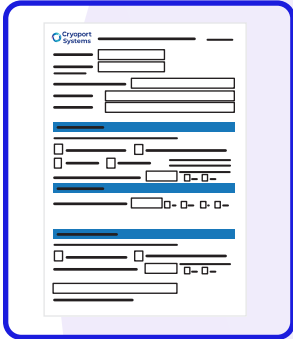
CRYOPORT EXPRESS® CRYOGENIC HV2 SHIPPING SYSTEM



LN2 Refill Without Samples Inside Instructions

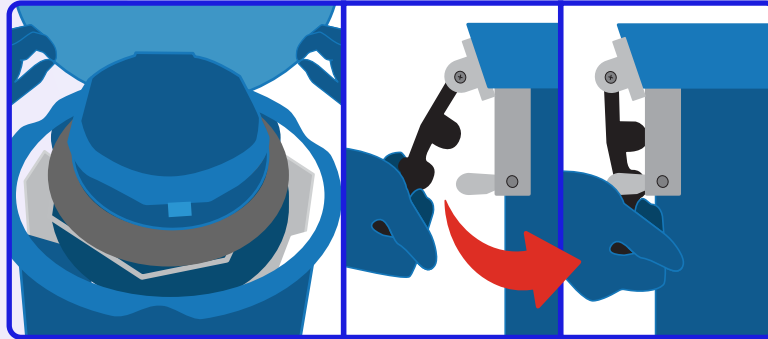
NEED HELP? CONTACT CRYOPORT SYSTEMS' CLIENT CARE AT +1 (949) 470-2305 OR EMAIL CS@CRYOPORT.COM

Step 18



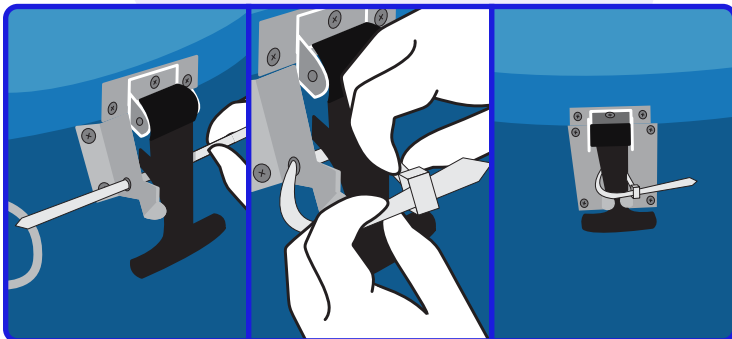
Complete Section C and D of the In-Field Recharging Verification Form.

Step 19



Close the lid and push the black rubber latch down towards the shipping system and connect it to the metal hardware. Complete this step for both latches.

Step 20



Insert the zip tie through each metal latch hole, wrap it around each latch, tighten it, and secure the lid. Do not over tighten the zip tie as it will cause breakage.