

CRYOPORT EXPRESS® CRYOGENIC HV3 SHIPPING SYSTEM



LN2 Refill Without Samples Inside Instructions

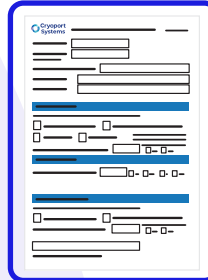
NEED HELP? CONTACT CRYOPORT SYSTEMS' CLIENT CARE AT +1 (949) 470-2305 OR EMAIL CS@CRYOPORT.COM

Step 1



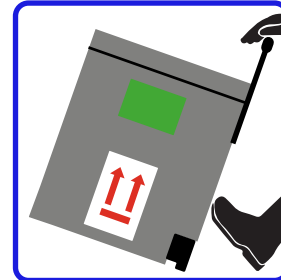
Wear the appropriate Personal Protective Equipment (PPE) when handling cryogenic shipments.

Step 2



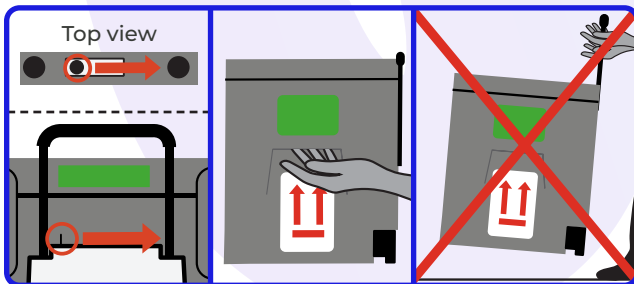
Contact Cryoport Systems' Client Care to access the In-Field Recharging Verification Form and complete Section A.

Step 3



To lift the metal handle, see Step 4. Once the handle is up, hold it, place your foot at the bottom of the metal panel, tilt the shipping system back, and use the integrated wheels to move it to the desired location.

Step 4

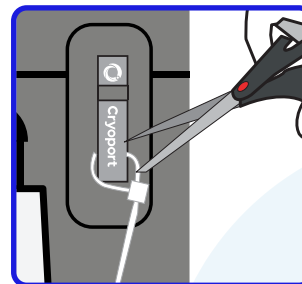


To unlock the metal handle, use one hand to slide the lever to the right and the other to lift or lower the handle.

NOTE: If the metal handle is bent or broken, use the nested handles on the sides to move the shipping system.

WARNING: DO NOT CARRY THE SHIPPING SYSTEM BY THE HANDLE.

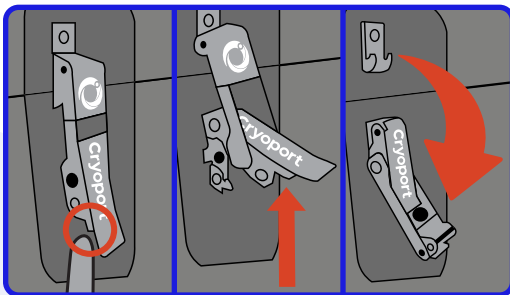
Step 5



Use scissors to remove zip ties from both steel latches.

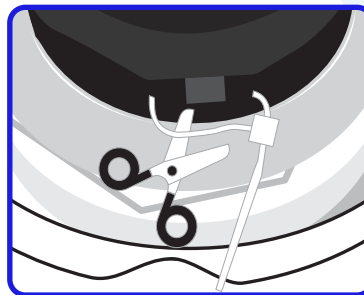
NOTE: If a serialized zip tie is present, record the serialized number on all necessary documentation.

Step 6



To unlock the latches, push the button located behind the latch handle and lift. To disconnect the top, pull the latch away from the hooks.

Step 7



To access the dewar, open the lid and cut off the zip tie on the hinged cap with scissors.

NOTE: If a serialized zip tie is present, record the serialized number on all necessary documentation.

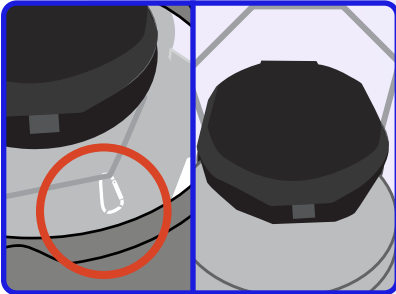
CRYOPORT EXPRESS® CRYOGENIC HV3 SHIPPING SYSTEM



LN2 Refill Without Samples Inside Instructions

NEED HELP? CONTACT CRYOPORT SYSTEMS' CLIENT CARE AT +1 (949) 470-2305 OR EMAIL CS@CRYOPORT.COM

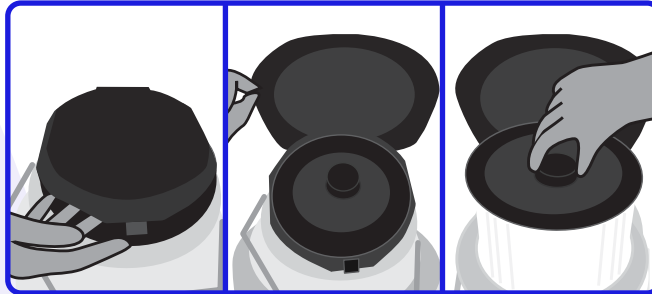
Step 8



Disconnect the dewar from the enclosure by unlatching the carabiner behind the dewar. Use the metal handle to remove the dewar from the enclosure and place it on a flat surface.

NOTE: Follow local safety regulations associated with proper lifting.

Step 9

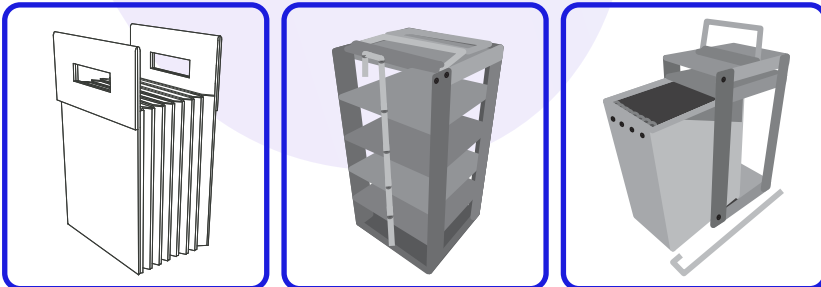


To remove the vapor plug, pull up on the circular handle located in the center. Place the vapor plug aside with the fleece lining facing up.

NOTE: If the dewar does not emit vapor after the plug is removed, please call Cryoport Systems' Client Care at +1 (949) 470-2305.

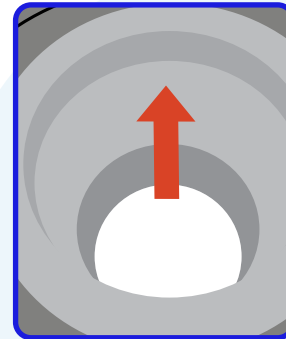
Step 10

If accessories are in the dewar:



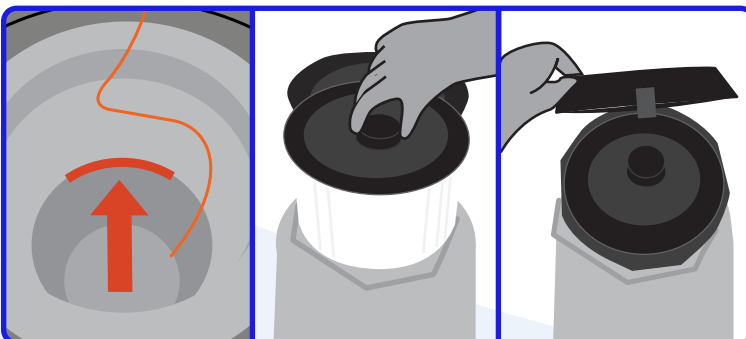
Remove all accessories from the dewar before proceeding.

Step 11



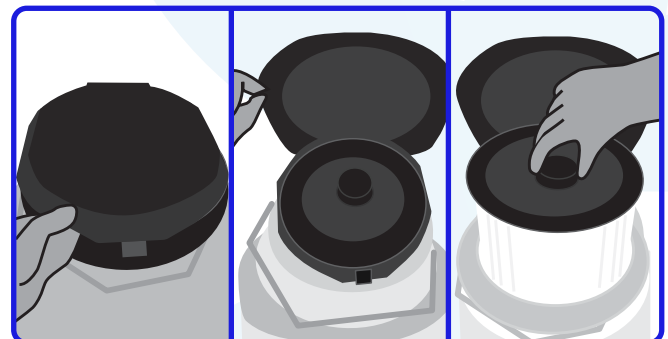
Remove the absorbent pad from inside of the dewar and place it on the enclosure lid.

Step 12



Slowly pour liquid nitrogen (LN2) into the opening. Fill the dewar up to the bottom of the neck tube. Reinsert the vapor plug. Close the hinged cap by pulling down on the lid. Let the dewar stabilize in a static position for at least 60 minutes.

Step 13



Once the dewar has stabilized, open the hinged cap and pull up on the circular handle in the center to remove the vapor plug. Set the vapor plug aside, with fleece lining face up.

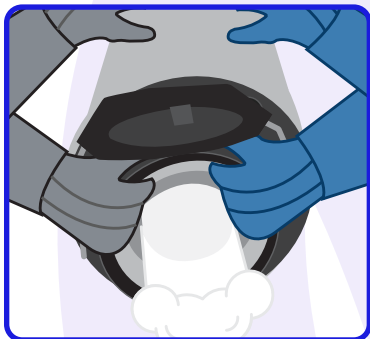
CRYOPORT EXPRESS® CRYOGENIC HV3 SHIPPING SYSTEM



LN2 Refill Without Samples Inside Instructions

NEED HELP? CONTACT CRYOPORT SYSTEMS' CLIENT CARE AT +1 (949) 470-2305 OR EMAIL CS@CRYOPORT.COM

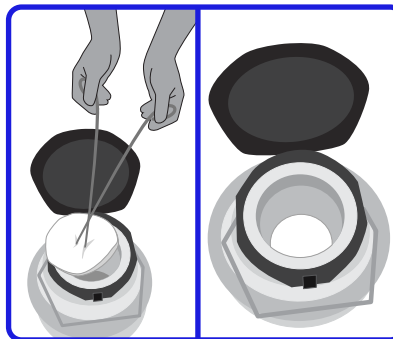
Step 14



Safely pour the excess LN2 into a compatible LN2 container.

NOTE: To avoid pinch points lift the dewar properly (as shown) and not by the handle. This process may take two people to complete. Follow local safety regulations associated with proper lifting.

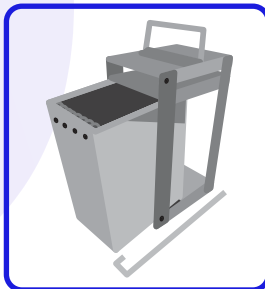
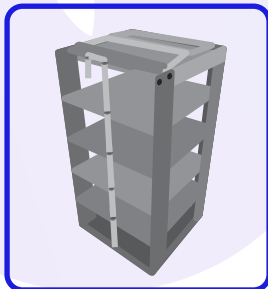
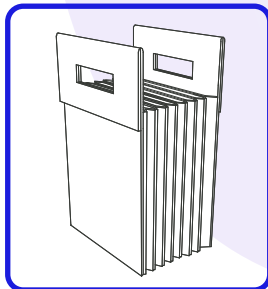
Step 15



Use the proper PPE to reinsert the absorbent pad and place it at the bottom of the dewar.

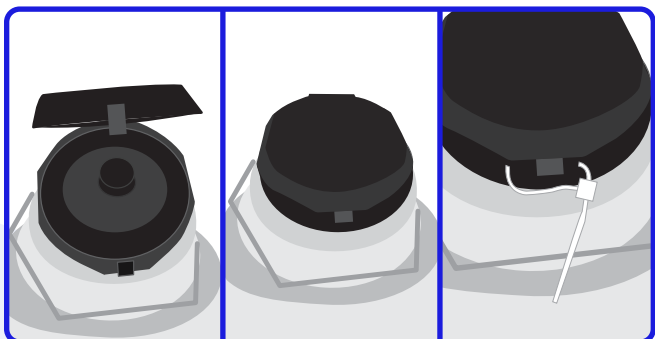
Step 16

Reinsert accessories in the dewar:



If using a SoftRack™, a metal cassette rack, or a metal cryovial rack, put it back in the dewar before proceeding.

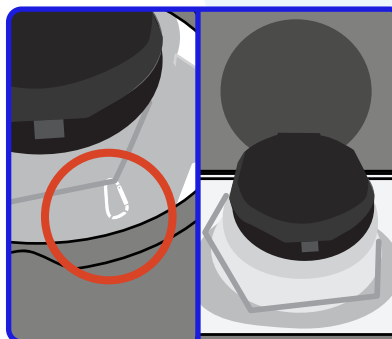
Step 17



Insert the vapor plug, close the hinged cap and secure it with a zip tie. Do not overtighten the zip tie as it will cause breakage.

NOTE: If a serialized zip tie is present, record the serialized number on all necessary documentation.

Step 18



Carefully place the dewar back into the enclosure and reconnect the dewar by latching the carabiner behind the dewar.

NOTE: Follow local safety regulations associated with proper lifting.

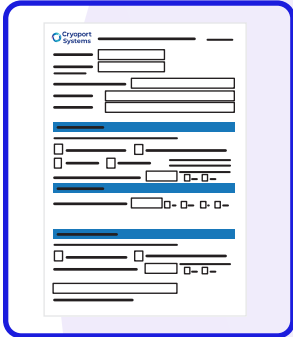
CRYOPORT EXPRESS® CRYOGENIC HV3 SHIPPING SYSTEM



LN2 Refill Without Samples Inside Instructions

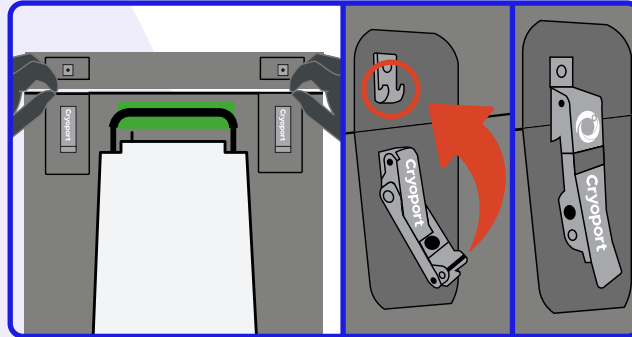
NEED HELP? CONTACT CRYOPORT SYSTEMS' CLIENT CARE AT +1 (949) 470-2305 OR EMAIL CS@CRYOPORT.COM

Step 19



Complete Section C and D of the In-Field Recharging Verification Form.

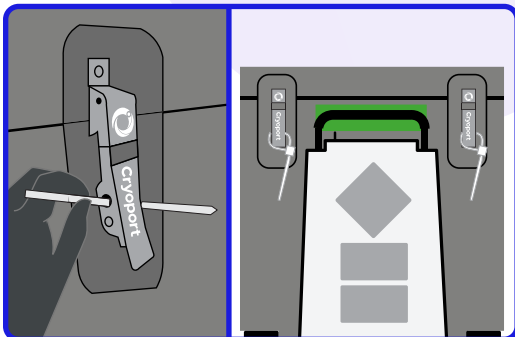
Step 20



Close the lid and align it with the base. After aligning the enclosure, lift the latch handles and connect them to the hooks. Then, pull the latch handle down towards the enclosure until you hear a click to secure the latch.

Complete this step for both latches.

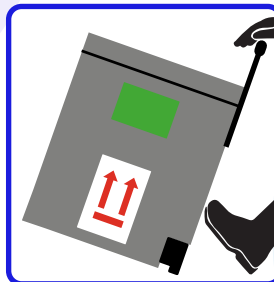
Step 21



Insert the zip tie from left to right through each metal latch hole, wrap it around each latch, tighten it, and secure the lid.

NOTE: If a serialized zip tie is present, record the serialized number on all necessary documentation.

Step 22



Place the shipping system on flat ground. See Step 4 to lift the metal handle with your hands, then place your foot at the bottom of the metal panel, tilt the shipping system back, and use the integrated wheels to move it to the desired location.